

SPECIFICATION SHEET

VERSION 2,00 **VERSION DATE** 19/09/22 **PRINT DATE** 17/07/24

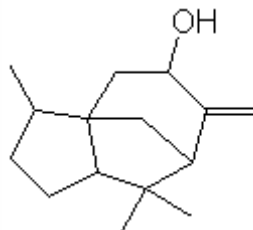
PRODUCT CEDROL TEXAS IFF NATURAL
APPLICATIONS Industrial raw material not intended for direct use.
IUPAC NAME CEDROL
SYNONYMS

PLANT OF ORIGIN
PART OF THE PLANT

FORMULA C₁₆ H₂₈ O
MOLECULAR WEIGHT 236,40
CAS 77-53-2

EINECS 201-035-6

FEMA -
TARIFF NUMBER 2906190090



REACH REGISTRATION NO. 01-2120790208-49

SPECIFICATIONS

ASPECT AT 20°C	CLEAR MOBILE LIQUID/CRYSTALLINE SOLID
COLOUR	COLORLESS TO PALE YELLOW
ODOUR	WOODY, CEDAR, DRY
TASTE	
DENSITY AT 20°C (g / ml)	-
DENSITY 25/25	-
REFRACTIVE INDEX n_D20	1,5080 - 1,5140
REFRACTIVE INDEX n_D25	-
OPTICAL ROTATION (°)	/
BOILING POINT (°C)	-
MELTING POINT (°C)	79°C
FLASH POINT (°C)	81,00
ASSAY (% GC)	SUM:73-85;CEDROL:60-75;WIDDROL:6-13
ACID VALUE (mg KOH/g)	-
SOLUBILITY	INSOLUBLE IN WATER
VAPOUR PRESSURE	0,0006666 hPa (calculated)
OTHER SOLUBILITIES	SOLUBLE IN ETHANOL

OTHER TECHNICAL DATA

STABILITY AND STORAGE

KEEP IN TIGHTLY CLOSED CONTAINER IN A COOL AND DRY PLACE, PROTECTED FROM LIGHT. WHEN STORED FOR MORE THAN 24 MONTHS, QUALITY SHOULD BE CHECKED BEFORE USE.
ASSURE COMPLETE MELTING BEFORE USE.

WE BELIEVE THE ABOVE INFORMATION TO BE CORRECT BUT WE DO NOT PRESENT IT AS ALL INCLUSIVE AND AS SUCH SHOULD BE USED AS A GUIDE. IT IS THE SOLE RESPONSIBILITY OF THE RECEIVER OF OUR PRODUCT TO COMPLY WITH EXISTING REGULATIONS AND INSTRUCTIONS.