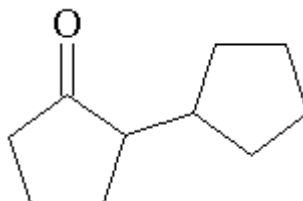


SPECIFICATION SHEET

| VERSION | 1,00 | VERSION DATE | 19/09/22 | PRINT DATE | 30/12/24 |
|-------------------------|--|--------------|----------|------------|----------|
| PRODUCT | 2-CYCLOPENTYL CYCLOPENTANONE | | | | |
| APPLICATIONS | Industrial raw material not intended for direct use. | | | | |
| IUPAC NAME | [1,1'-BICYCLOPENTYL]-2-ONE | | | | |
| SYNONYMS | 2-CYCLOPENTYL CYCLOPENTANONE | | | | |
| FORMULA | C10 H16 O | | | | |
| MOLECULAR WEIGHT | 152,24 | | | | |
| CAS | 4884-24-6 | | | | |
| EINECS | 225-495-2 | | | | |
| FEMA | 4514 | | | | |
| TARIFF NUMBER | 2914290090 | | | | |



REACH REGISTRATION NO. Exempt from registration (imported/manufactured < 1 ton/year)

SPECIFICATIONS

| | | |
|---------------------------------|--------------------------------------|----------|
| ASPECT AT 20°C | CLEAR MOBILE LIQUID | |
| COLOUR | COLORLESS TO PALE YELLOW | |
| ODOUR | FRESH GREEN COOL MINT, AGRESTIC WOOD | |
| TASTE | | |
| DENSITY AT 20°C (g / ml) | 0,973 | - 0,983 |
| DENSITY 25/25 | - | |
| REFRACTIVE INDEX nD20 | 1,4750 | - 1,4810 |
| REFRACTIVE INDEX nD25 | - | |
| OPTICAL ROTATION (°) | / | |
| BOILING POINT (°C) | - | |
| MELTING POINT (°C) | - | |
| FLASH POINT (°C) | 104,00 | |
| ASSAY (% GC) | > 97 | |
| ACID VALUE (mg KOH/g) | < 2 | |
| SOLUBILITY | INSOLUBLE IN WATER | |
| VAPOUR PRESSURE | 17,3 hPa (109°C) | |
| OTHER SOLUBILITIES | SOLUBLE IN ETHANOL | |

OTHER TECHNICAL DATA USEFUL FOR GIVING FRESH MINTY CHARACTER AND DIFFUSIVENESS TO CITRUS, HERBAL, FRUITY AND FOUGERE ACCORDS. STABLE IN A WIDE RANGE OF PRODUCTS. NOT REPORTED AS BEING FOUND IN NATURE.

STABILITY AND STORAGE

KEEP IN TIGHTLY CLOSED CONTAINER IN A COOL AND DRY PLACE, PROTECTED FROM LIGHT. WHEN STORED FOR MORE THAN 24 MONTHS, QUALITY SHOULD BE CHECKED BEFORE USE.

WE BELIEVE THE ABOVE INFORMATION TO BE CORRECT BUT WE DO NOT PRESENT IT AS ALL INCLUSIVE AND AS SUCH SHOULD BE USED AS A GUIDE. IT IS THE SOLE RESPONSIBILITY OF THE RECEIVER OF OUR PRODUCT TO COMPLY WITH EXISTING REGULATIONS AND INSTRUCTIONS.