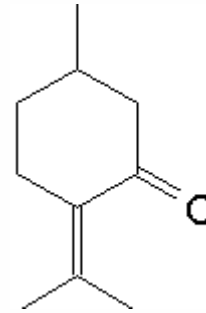


SPECIFICATION SHEET

VERSION 2,00 **VERSION DATE** 13/03/24 **PRINT DATE** 17/07/24

PRODUCT PULEGONE NATURAL (EX PENNYROYAL)
APPLICATIONS Industrial raw material not intended for direct use.
IUPAC NAME 1-METHYL-4-ISOPROPYLIDENE-3-CYCLOHEXANONE
SYNONYMS P-MENTH-4(8)-EN-3-ONE, (1R)-(+)-PULEGONE

PLANT OF ORIGIN Mentha pulegium L.
PART OF THE PLANT FLOWERING PLANT
FORMULA C10 H16 O
MOLECULAR WEIGHT 152,00
CAS 89-82-7
CAS 2 15932-80-6
EINECS 201-943-2
EINECS 2 240-070-1
FEMA 2963
TARIFF NUMBER 2914290090
KOSHER CERTIFICATE AVAILABLE ON REQUEST



REACH REGISTRATION NO. Exempt from registration (imported/manufactured < 1 ton/year)

SPECIFICATIONS

ASPECT AT 20°C CLEAR MOBILE LIQUID
COLOUR COLORLESS - PALE YELLOW
ODOUR MINTY, FRESH
TASTE
DENSITY AT 20°C (g / ml) 0,930 - 0,940
DENSITY 25/25 -
REFRACTIVE INDEX nD20 1,4830 - 1,4930
REFRACTIVE INDEX nD25 -
OPTICAL ROTATION (°) 19,00 / 25,00
BOILING POINT (°C) 223 - 225
MELTING POINT (°C) -
FLASH POINT (°C) 82,00
ASSAY (% GC) > 90
ACID VALUE (mg KOH/g) -
SOLUBILITY INSOLUBLE IN WATER
VAPOUR PRESSURE NOT DETERMINED
OTHER SOLUBILITIES SOLUBLE IN ETHANOL

OTHER TECHNICAL DATA NATURAL (R)-DEXTRO QUALITY.

STABILITY AND STORAGE

KEEP IN TIGHTLY CLOSED CONTAINER IN A COOL AND DRY PLACE, PROTECTED FROM LIGHT. WHEN STORED FOR MORE THAN 24 MONTHS, QUALITY SHOULD BE CHECKED BEFORE USE.

WE BELIEVE THE ABOVE INFORMATION TO BE CORRECT BUT WE DO NOT PRESENT IT AS ALL INCLUSIVE AND AS SUCH SHOULD BE USED AS A GUIDE. IT IS THE SOLE RESPONSIBILITY OF THE RECEIVER OF OUR PRODUCT TO COMPLY WITH EXISTING REGULATIONS AND INSTRUCTIONS.

THIS PRODUCT HAS NOT BEEN FILTERED DUE TO TECHNICAL REASONS. WE RECOMMEND NOT TO USE IT UNLESS FILTERED WHEN USED AS A RAW MATERIAL IN FOOD INTENDED FOR FINAL CONSUMERS.