

SPECIFICATION SHEET

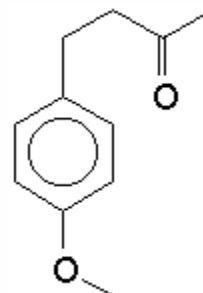
VERSION 3,00 **VERSION DATE** 19/09/22 **PRINT DATE** 06/05/24

PRODUCT RASPBERRY KETONE METHYL ETHER
APPLICATIONS Industrial raw material not intended for direct use.
IUPAC NAME 4-(PARA-METHOXYPHENYL)-2-BUTANONE
SYNONYMS P-METHOXYPHENYL-2-BUTANONE, ANISYL ACETONE

FORMULA C11 H14 O2
MOLECULAR WEIGHT 178,00
CAS 104-20-1

EINECS 203-184-2

FEMA 2672
TARIFF NUMBER 2914500090



REACH REGISTRATION NO. On request. REACH and non-REACH material available for this product.

SPECIFICATIONS

ASPECT AT 20°C	CLEAR MOBILE LIQUID
COLOUR	COLORLESS TO PALE YELLOW
ODOUR	SWEET, FLORAL, FRUIT, PEACH, RASPBERRY
TASTE	
DENSITY AT 20°C (g / ml)	1,040 - 1,050
DENSITY 25/25	-
REFRACTIVE INDEX nD20	1,5150 - 1,5250
REFRACTIVE INDEX nD25	-
OPTICAL ROTATION (°)	/
BOILING POINT (°C)	152-153 (7 mm Hg)
MELTING POINT (°C)	9 - 10
FLASH POINT (°C)	110,00
ASSAY (% GC)	> 98
ACID VALUE (mg KOH/g)	-
SOLUBILITY	INSOLUBLE IN WATER
VAPOUR PRESSURE	NOT DETERMINED
OTHER SOLUBILITIES	SOLUBLE IN ETHANOL

OTHER TECHNICAL DATA

STABILITY AND STORAGE

KEEP IN TIGHTLY CLOSED CONTAINER IN A COOL AND DRY PLACE, PROTECTED FROM LIGHT. WHEN STORED FOR MORE THAN 24 MONTHS, QUALITY SHOULD BE CHECKED BEFORE USE.

WE BELIEVE THE ABOVE INFORMATION TO BE CORRECT BUT WE DO NOT PRESENT IT AS ALL INCLUSIVE AND AS SUCH SHOULD BE USED AS A GUIDE. IT IS THE SOLE RESPONSIBILITY OF THE RECEIVER OF OUR PRODUCT TO COMPLY WITH EXISTING REGULATIONS AND INSTRUCTIONS.

THIS PRODUCT HAS NOT BEEN FILTERED DUE TO TECHNICAL REASONS. WE RECOMMEND NOT TO USE IT UNLESS FILTERED WHEN USED AS A RAW MATERIAL IN FOOD INTENDED FOR FINAL CONSUMERS.