

SPECIFICATION SHEET

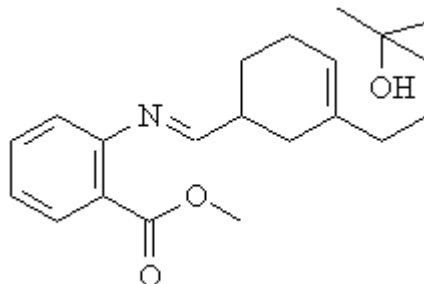
VERSION 2,00 **VERSION DATE** 27/04/16 **PRINT DATE** 25/10/20

PRODUCT SCHIFF BASE, LYRAL
APPLICATIONS Raw material for industrial use intended for the manufacture of fragrances.
IUPAC NAME SCHIFF BASE, LYRAL/METHYL ANTHRANILATE
SYNONYMS LYRAME SUPER; SCHIFF BASE, LYRAL/METHYL ANTHRANILATE; LYRANTION

FORMULA C21 H29 N O3
MOLECULAR WEIGHT 343,47
CAS 67634-12-2

EINECS 266-816-6

TARIFF NUMBER 2925290090



REACH REGISTRATION NO. Exempt from registration (imported/manufactured < 1 ton/year)

SPECIFICATIONS

ASPECT AT 20° C	VISCOUS LIQUID
COLOUR	YELLOW
ODOUR	FLORAL,FRUITY,MUGUET,ORANGE BLOSSOM
TASTE	
DENSITY A 20° C (g / ml)	-
DENSITY 25/25	-
REFRACTIVE INDEX nD20	1,5770 - 1,5870
REFRACTIVE INDEX nD25	-
OPTICAL ROTATION (°)	/
BOILING POINT (°C)	-
MELTING POINT (°C)	
FLASH POINT (°C)	104,00
ASSAY (% GC)	-
ACID VALUE (mg KOH/g)	-
SOLUBILITY	INSOLUBLE IN WATER
VAPOUR PRESSURE	NOT DETERMINED
OTHER SOLUBILITIES	SOLUBLE IN ETHANOL

OTHER TECHNICAL DATA IT HAS FIXATIVE PROPERTIES. SYNONIM: Methyl 2-(((4-(4-hydroxy-4-methylpentyl) -3-cyclohexenyl)methylene)amino

STABILITY AND STORAGE

KEEP IN TIGHTLY CLOSED CONTAINER IN A COOL AND DRY PLACE, PROTECTED FROM LIGHT. WHEN STORED FOR MORE THAN 36 MONTHS, QUALITY SHOULD BE CHECKED BEFORE USE.
 IT CONTAINS 0,05% APPROX. OF BHT. IT IS NOT DILUTED IN SOLVENTS.

WE BELIEVE THE ABOVE INFORMATION TO BE CORRECT BUT WE DO NOT PRESENT IT AS ALL INCLUSIVE AND AS SUCH SHOULD BE USED AS A GUIDE. IT IS THE SOLE RESPONSIBILITY OF THE RECEIVER OF OUR PRODUCT TO COMPLY WITH EXISTING REGULATIONS AND INSTRUCTIONS.