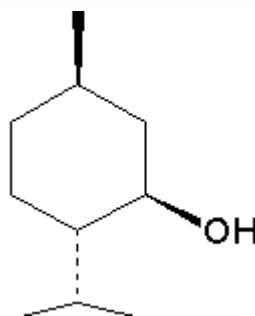


SPECIFICATION SHEET

VERSION	5,00	VERSION DATE	19/09/22	PRINT DATE	25/04/24
PRODUCT	MENTHOL CRYSTALS, NATURAL				
APPLICATIONS	Industrial raw material not intended for direct use.				
IUPAC NAME	5-METHYL-2-ISOPROYL CYCLOHEXANOL				
SYNONYMS	P-MENTHAN-3-OL, L-MENTHOL				
PLANT OF ORIGIN	Ex Mentha arvensis				
PART OF THE PLANT	FLOWERING TOPS				
FORMULA	C ₁₀ H ₂₀ O				
MOLECULAR WEIGHT	156,00				
CAS	2216-51-5				
CAS 2	89-78-1				
EINECS	218-690-9				
EINECS 2	201-939-0				
FEMA	2665				
TARIFF NUMBER	2906110000				
FOOD GRADE CERTIFICATE	AVAILABLE ON REQUEST				
REACH REGISTRATION NO.	01-2119458866-21				



SPECIFICATIONS

ASPECT AT 20°C	CRYSTALLINE SOLID	
COLOUR	COLORLESS	
ODOUR	COOL, MENTHOLIC	
TASTE	CHARACTERISTIC, REFRESHING	
DENSITY AT 20°C (g / ml)	0,813	- 0,820
DENSITY 25/25	-	
REFRACTIVE INDEX n_D20	1,3700	- 1,3750
REFRACTIVE INDEX n_D25	-	
OPTICAL ROTATION (°)	-51,00	/ -48,00
BOILING POINT (°C)	-	
MELTING POINT (°C)	41 - 44	
FLASH POINT (°C)	93,00	
ASSAY (% GC)	L-MENTHOL > 99	
ACID VALUE (mg KOH/g)	-	
SOLUBILITY	SLIGHTLY SOLUBLE IN WATER	
VAPOUR PRESSURE	NOT DETERMINED	
OTHER SOLUBILITIES	SOLUBLE IN ETHANOL	
OTHER TECHNICAL DATA	VALUES OF DENSITY AND REFRACTIVE INDEX OF A DISSOLUTION OF 10% IN ETHANOL.	

STABILITY AND STORAGE

KEEP IN TIGHTLY CLOSED CONTAINER IN A COOL AND DRY PLACE, PROTECTED FROM LIGHT. WHEN STORED FOR MORE THAN 36 MONTHS, QUALITY SHOULD BE CHECKED BEFORE USE.
KEEP BETWEEN 15-30°C

WE BELIEVE THE ABOVE INFORMATION TO BE CORRECT BUT WE DO NOT PRESENT IT AS ALL INCLUSIVE AND AS SUCH SHOULD BE USED AS A GUIDE.
IT IS THE SOLE RESPONSIBILITY OF THE RECEIVER OF OUR PRODUCT TO COMPLY WITH EXISTING REGULATIONS AND INSTRUCTIONS.

THIS PRODUCT HAS NOT BEEN FILTERED DUE TO TECHNICAL REASONS. WE RECOMMEND NOT TO USE IT UNLESS FILTERED WHEN USED AS A RAW MATERIAL IN FOOD INTENDED FOR FINAL CONSUMERS.