

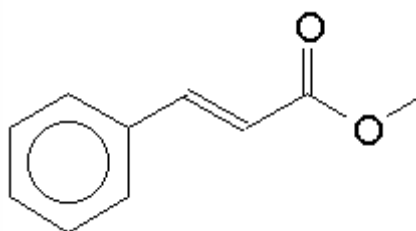
SPECIFICATION SHEET

VERSION 5,00 **VERSION DATE** 19/09/22 **PRINT DATE** 27/04/24

PRODUCT METHYL CINNAMATE
APPLICATIONS Industrial raw material not intended for direct use.
IUPAC NAME METHYL CINNAMATE
SYNONYMS METHYL 3-PHENYLPROPENOATE

FORMULA C10 H10 O2
MOLECULAR WEIGHT 162,19
CAS 103-26-4
CAS 2 1754-62-7
EINECS 203-093-8

FEMA 2698
TARIFF NUMBER 2916399090



FOOD GRADE CERTIFICATE AVAILABLE ON REQUEST
REACH REGISTRATION NO. On request. REACH and non-REACH material available for this product.

SPECIFICATIONS

ASPECT AT 20°C LIQUID / SOLID
COLOUR WHITE OR SLIGHTLY YELLOW
ODOUR SWEET, BALSAMIC WITH FRUITY NUANCES
TASTE FRUITY, STRAWBERRY-LIKE
DENSITY AT 20°C (g / ml) -
DENSITY 25/25 -
REFRACTIVE INDEX nD20 -
REFRACTIVE INDEX nD25 -
OPTICAL ROTATION (°) /
BOILING POINT (°C) 262°C (1013 mbar)
MELTING POINT (°C) 33 - 37
FLASH POINT (°C) 123,00
ASSAY (% GC) > 98
ACID VALUE (mg KOH/g) < 1
SOLUBILITY SOLUBILITY IN WATER: 299 mg/l (20°C)
VAPOUR PRESSURE < 0,1 mbar (20°C)
OTHER SOLUBILITIES SOLUBLE 1:1 W/V IN ETHANOL 80%

OTHER TECHNICAL DATA THIS SUBSTANCE CAN POLYMERIZE, PROCESS WHICH IS FAVOURED BY REPEATED MELTING. IT IS WISE TO DO A SOLUBILITY TEST 1:10 IN ETHANOL 96° BEFORE USING. AND STOCKING IT IN THE HOT CHAMBER AFTER BEING MELTED.

STABILITY AND STORAGE

KEEP IN TIGHTLY CLOSED CONTAINER IN A COOL AND DRY PLACE, PROTECTED FROM LIGHT. WHEN STORED FOR MORE THAN 9 MONTHS, QUALITY SHOULD BE CHECKED BEFORE USE.
DO SOLUBILITY TEST ETHANOL 96° BEFORE USING. IT MAY CONTAIN 0,05% OF ALPHA-TOCOPHEROL.

WE BELIEVE THE ABOVE INFORMATION TO BE CORRECT BUT WE DO NOT PRESENT IT AS ALL INCLUSIVE AND AS SUCH SHOULD BE USED AS A GUIDE. IT IS THE SOLE RESPONSIBILITY OF THE RECEIVER OF OUR PRODUCT TO COMPLY WITH EXISTING REGULATIONS AND INSTRUCTIONS.

THIS PRODUCT HAS NOT BEEN FILTERED DUE TO TECHNICAL REASONS. WE RECOMMEND NOT TO USE IT UNLESS FILTERED WHEN USED AS A RAW MATERIAL IN FOOD INTENDED FOR FINAL CONSUMERS.