

SPECIFICATION SHEET

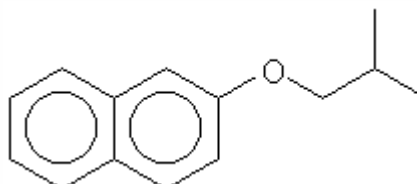
VERSION 3,00 **VERSION DATE** 19/09/22 **PRINT DATE** 04/05/24

PRODUCT NAPHTYL ISOBUTYL ETHER BETA IFF
APPLICATIONS Industrial raw material not intended for direct use.
IUPAC NAME BETA-NAPHTYL ISOBUTYL ETHER
SYNONYMS BETA-NAPHTYL ISOBUTYL ETHER

FORMULA C14 H16 O
MOLECULAR WEIGHT 200,00
CAS 2173-57-1

EINECS 218-529-2

FEMA 3719
TARIFF NUMBER 2909199090



REACH REGISTRATION NO. 01-2120735662-54

SPECIFICATIONS

ASPECT AT 20°C	LIQUID / SOLID
COLOUR	WHITE
ODOUR	FLORAL,STRAWBERRY,SWEET,NEROLI
TASTE	
DENSITY AT 20°C (g / ml)	-
DENSITY 25/25	-
REFRACTIVE INDEX nD20	-
REFRACTIVE INDEX nD25	-
OPTICAL ROTATION (°)	/
BOILING POINT (°C)	-
MELTING POINT (°C)	> 32
FLASH POINT (°C)	93,00
ASSAY (% GC)	> 97
ACID VALUE (mg KOH/g)	-
SOLUBILITY	INSOLUBLE IN WATER
VAPOUR PRESSURE	< 0,1 kPa (20°C)
OTHER SOLUBILITIES	SOLUBLE IN ETHANOL

OTHER TECHNICAL DATA

STABILITY AND STORAGE

KEEP IN TIGHTLY CLOSED CONTAINER IN A COOL AND DRY PLACE, PROTECTED FROM LIGHT. WHEN STORED FOR MORE THAN 24 MONTHS, QUALITY SHOULD BE CHECKED BEFORE USE.
KEEP BETWEEN 8 -10°C

WE BELIEVE THE ABOVE INFORMATION TO BE CORRECT BUT WE DO NOT PRESENT IT AS ALL INCLUSIVE AND AS SUCH SHOULD BE USED AS A GUIDE.
IT IS THE SOLE RESPONSIBILITY OF THE RECEIVER OF OUR PRODUCT TO COMPLY WITH EXISTING REGULATIONS AND INSTRUCTIONS.