

SPECIFICATION SHEET

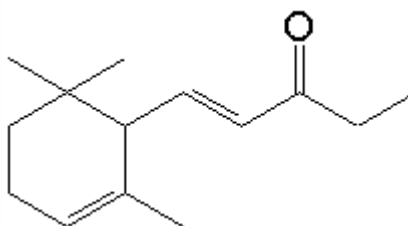
VERSION 1,00 **VERSION DATE** 19/09/22 **PRINT DATE** 20/04/24

PRODUCT METHYL IONONE ALPHA EXTRA BHT IFF
APPLICATIONS Industrial raw material not intended for direct use.
IUPAC NAME 1-(2,6,6-TRIMETHYL-2-CYCLOHEXEN-1-YL)PENT-1-EN-3-ONE
SYNONYMS

FORMULA C14 H22 O
MOLECULAR WEIGHT 206,20
CAS 7779-30-8

EINECS 231-926-5

TARIFF NUMBER 2914230000



REACH REGISTRATION NO. 01-2120769663-42

SPECIFICATIONS

ASPECT AT 20°C	CLEAR MOBILE LIQUID
COLOUR	PALE YELLOW
ODOUR	WOODY, VIOLET, FLORAL
TASTE	
DENSITY AT 20°C (g / ml)	0,925 - 0,931
DENSITY 25/25	-
REFRACTIVE INDEX nD20	1,4980 - 1,5020
REFRACTIVE INDEX nD25	-
OPTICAL ROTATION (°)	/
BOILING POINT (°C)	-
MELTING POINT (°C)	-
FLASH POINT (°C)	94,00
ASSAY (% GC)	SUM OF SECTION > 90%. IONONE,N-METHYL ALPHA 65-75%
ACID VALUE (mg KOH/g)	-
SOLUBILITY	INSOLUBLE IN WATER
VAPOUR PRESSURE	0,04 hPa (20°C)
OTHER SOLUBILITIES	SOLUBLE IN ETHANOL

OTHER TECHNICAL DATA

STABILITY AND STORAGE

KEEP IN TIGHTLY CLOSED CONTAINER IN A COOL AND DRY PLACE, PROTECTED FROM LIGHT. WHEN STORED FOR MORE THAN 24 MONTHS, QUALITY SHOULD BE CHECKED BEFORE USE.
 CONTAINS 0,1% BHT

WE BELIEVE THE ABOVE INFORMATION TO BE CORRECT BUT WE DO NOT PRESENT IT AS ALL INCLUSIVE AND AS SUCH SHOULD BE USED AS A GUIDE.
 IT IS THE SOLE RESPONSIBILITY OF THE RECEIVER OF OUR PRODUCT TO COMPLY WITH EXISTING REGULATIONS AND INSTRUCTIONS.