

SPECIFICATION SHEET

VERSION 2,00 **VERSION DATE** 31/08/22 **PRINT DATE** 28/04/24

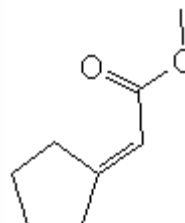
PRODUCT CYCLOPIDENE FIRMENICH 937160
APPLICATIONS Industrial raw material not intended for direct use.
IUPAC NAME ACETIC ACID, CYCLOPENTYLIDENE-, METHYL ESTER
SYNONYMS TUBEROSE ACETATE, METHYL CYCLOPENTYLIDENE ACETATE

FORMULA C8 H12 O2
MOLECULAR WEIGHT 140,10
CAS 40203-73-4

EINECS 254-837-3

FEMA -
TARIFF NUMBER 2916200090
KOSHER CERTIFICATE AVAILABLE ON REQUEST

REACH REGISTRATION NO. 01-2120065587-45



SPECIFICATIONS

ASPECT AT 20°C	CLEAR MOBILE LIQUID	
COLOUR	COLORLESS TO PALE YELLOW	
ODOUR	FLORAL MODIFIER RELATED TO YLANG	
TASTE		
DENSITY AT 20°C (g / ml)	1,004	- 1,012
DENSITY 25/25	1,003	- 1,011
REFRACTIVE INDEX nD20	1,4730	- 1,4770
REFRACTIVE INDEX nD25	1,4710	- 1,4750
OPTICAL ROTATION (°)	/	
BOILING POINT (°C)	-	
MELTING POINT (°C)	-	
FLASH POINT (°C)	69,00	
ASSAY (% GC)	> 90	
ACID VALUE (mg KOH/g)	< 1	
SOLUBILITY	INSOLUBLE IN WATER	
VAPOUR PRESSURE	NOT DETERMINED	
OTHER SOLUBILITIES	SOLUBLE IN ETHANOL	

OTHER TECHNICAL DATA IT GIVES DIFFUSION AND LIFT. IT COMBINES THE SALICYLATE/CRESYL HARMONY THAT EXISTS IN MANY WHITE FLORALS.

STABILITY AND STORAGE

KEEP IN TIGHTLY CLOSED CONTAINER IN A COOL AND DRY PLACE, PROTECTED FROM LIGHT. WHEN STORED FOR MORE THAN 24 MONTHS, QUALITY SHOULD BE CHECKED BEFORE USE.
 IT CONTAINS 0,05% BHT

WE BELIEVE THE ABOVE INFORMATION TO BE CORRECT BUT WE DO NOT PRESENT IT AS ALL INCLUSIVE AND AS SUCH SHOULD BE USED AS A GUIDE.
 IT IS THE SOLE RESPONSIBILITY OF THE RECEIVER OF OUR PRODUCT TO COMPLY WITH EXISTING REGULATIONS AND INSTRUCTIONS.