

## SPECIFICATION SHEET

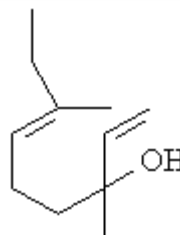
**VERSION** 3,00 **VERSION DATE** 19/09/22 **PRINT DATE** 25/04/24

**PRODUCT** ETHYL LINALOOL BASF  
**APPLICATIONS** Industrial raw material not intended for direct use.  
**IUPAC NAME** 3,7-DIMETHYL-1,6-NONADIEN-3-OL  
**SYNONYMS**

**FORMULA** C<sub>11</sub> H<sub>20</sub> O  
**MOLECULAR WEIGHT** 168,28  
**CAS** 10339-55-6

**EINECS** 233-732-6

**FEMA** -  
**TARIFF NUMBER** 2905299090



**REACH REGISTRATION NO.** 01-2119969272-32

## SPECIFICATIONS

<b>ASPECT AT 20°C</b>	CLEAR MOBILE LIQUID
<b>COLOUR</b>	COLORLESS TO PALE YELLOW
<b>ODOUR</b>	FLORAL, FRESH, WOODY, ROSEWOOD
<b>TASTE</b>	
<b>DENSITY AT 20°C (g / ml)</b>	0,861 - 0,865
<b>DENSITY 25/25</b>	0,858 - 0,863
<b>REFRACTIVE INDEX n<sub>D</sub>20</b>	1,4620 - 1,4660
<b>REFRACTIVE INDEX n<sub>D</sub>25</b>	-
<b>OPTICAL ROTATION (°)</b>	/
<b>BOILING POINT (°C)</b>	74°C (4 mbar); 106°C (20 hPa)
<b>MELTING POINT (°C)</b>	CA. -50°C
<b>FLASH POINT (°C)</b>	86,00
<b>ASSAY (% GC)</b>	SUM ISOMERS > 97%. CIS: 30 - 45%, TRANS: 54 - 69%
<b>ACID VALUE (mg KOH/g)</b>	
<b>SOLUBILITY</b>	SOLUBILITY IN WATER: 563 mg/L
<b>VAPOUR PRESSURE</b>	CA.0,00267 kPa20°C;1,3 mbar59°
<b>OTHER SOLUBILITIES</b>	SOLUBLE IN ETHANOL

**OTHER TECHNICAL DATA** ARTIFICIAL SUBSTANCE, NOT REPORTED AS BEING FOUND IN NATURE. NOT ALLOWED TO BE USED IN FLAVORS.

## STABILITY AND STORAGE

KEEP IN TIGHTLY CLOSED CONTAINER IN A COOL AND DRY PLACE, PROTECTED FROM LIGHT. WHEN STORED FOR MORE THAN 24 MONTHS, QUALITY SHOULD BE CHECKED BEFORE USE.  
250 PPM OF ALPHA-TOCOPHEROL AS ANTIOXIDANT.

WE BELIEVE THE ABOVE INFORMATION TO BE CORRECT BUT WE DO NOT PRESENT IT AS ALL INCLUSIVE AND AS SUCH SHOULD BE USED AS A GUIDE.  
IT IS THE SOLE RESPONSIBILITY OF THE RECEIVER OF OUR PRODUCT TO COMPLY WITH EXISTING REGULATIONS AND INSTRUCTIONS.