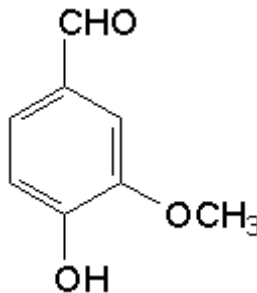


SPECIFICATION SHEET

VERSION	1,00	VERSION DATE	19/09/22	PRINT DATE	25/04/24
PRODUCT	VANILLIN NATURAL (EX BEANS) FIRMENICH 146509				
APPLICATIONS	Industrial raw material not intended for direct use.				
IUPAC NAME	VANILLIN				
SYNONYMS					
PLANT OF ORIGIN	Vanilla Planifolia				
PART OF THE PLANT	BEANS				
FORMULA					
MOLECULAR WEIGHT	0,00				
CAS	84650-63-5				
CAS 2	8024-06-4				
EINECS	283-521-8				
FEMA	3105				
TARIFF NUMBER	2912410000				
FOOD GRADE CERTIFICATE	AVAILABLE ON REQUEST				
REACH REGISTRATION NO.	On request. REACH and non-REACH material available for this product.				



SPECIFICATIONS

ASPECT AT 20°C	SOLID
COLOUR	OFF-WHITE TO PALE YELLOW
ODOUR	VANILLA
TASTE	
DENSITY AT 20°C (g / ml)	-
DENSITY 25/25	-
REFRACTIVE INDEX nD20	-
REFRACTIVE INDEX nD25	-
OPTICAL ROTATION (°)	/
BOILING POINT (°C)	
MELTING POINT (°C)	
FLASH POINT (°C)	101,00
ASSAY (% GC)	92% TO 97%
ACID VALUE (mg KOH/g)	-
SOLUBILITY	PARTLY SOLUBLE IN WATER
VAPOUR PRESSURE	NOT DETERMINED
OTHER SOLUBILITIES	SOLUBLE IN ETHANOL

OTHER TECHNICAL DATA

STABILITY AND STORAGE

KEEP IN TIGHTLY CLOSED CONTAINER IN A COOL AND DRY PLACE, PROTECTED FROM LIGHT. WHEN STORED FOR MORE THAN 24 MONTHS, QUALITY SHOULD BE CHECKED BEFORE USE.

WE BELIEVE THE ABOVE INFORMATION TO BE CORRECT BUT WE DO NOT PRESENT IT AS ALL INCLUSIVE AND AS SUCH SHOULD BE USED AS A GUIDE. IT IS THE SOLE RESPONSIBILITY OF THE RECEIVER OF OUR PRODUCT TO COMPLY WITH EXISTING REGULATIONS AND INSTRUCTIONS.

THIS PRODUCT HAS NOT BEEN FILTERED DUE TO TECHNICAL REASONS. WE RECOMMEND NOT TO USE IT UNLESS FILTERED WHEN USED AS A RAW MATERIAL IN FOOD INTENDED FOR FINAL CONSUMERS.