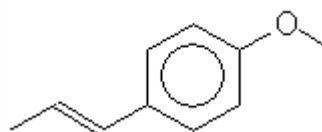


SPECIFICATION SHEET

VERSION 4,00 **VERSION DATE** 08/02/17 **PRINT DATE** 04/03/21

PRODUCT ANETHOLE NATURAL (EX STAR ANISE)
APPLICATIONS Raw material for industrial use intended for the manufacture of flavours and/or fragrances.
IUPAC NAME 1-METHOXY-4-[(1E)-1-PROPEN-1-YL]BENZENE
SYNONYMS trans-ANETHOLE, trans-p-ANETHOLE

PLANT OF ORIGIN Illicium verum Hook
PART OF THE PLANT SEEDS AND LEAVES
FORMULA C10 H12 O
MOLECULAR WEIGHT 148,00
CAS 4180-23-8
CAS 2 104-46-1
EINECS 224-052-0
EINECS 2 203-205-5
FEMA 2086
TARIFF NUMBER 2909309090



FOOD GRADE CERTIFICATE AVAILABLE ON REQUEST
REACH REGISTRATION NO. On request. REACH and non-REACH material available for this product.

SPECIFICATIONS

ASPECT AT 20° C	LIQUID/SOLID
COLOUR	COLOURLESS
ODOUR	ANISE LIKE, SWEET
TASTE	SWEET
DENSITY A 20° C (g / ml)	0,980 - 0,990
DENSITY 25/25	0,983 - 0,988
REFRACTIVE INDEX nD20	1,5600 - 1,5620
REFRACTIVE INDEX nD25	-
OPTICAL ROTATION (°)	-0,15 / 0,15
BOILING POINT (°C)	234 - 237
MELTING POINT (°C)	> 21,2
FLASH POINT (°C)	90,00
ASSAY (% GC)	TRANS-ANETHOLE>99%; CIS-ANETHOLE<0,15%
ACID VALUE (mg KOH/g)	-
SOLUBILITY	NEARLY INSOLUBLE IN WATER
VAPOUR PRESSURE	NOT DETERMINED
OTHER SOLUBILITIES	1:2 V/V ETHANOL 96. MISCIBLE IN CHLOROFORM, ETHER.

OTHER TECHNICAL DATA

STABILITY AND STORAGE

KEEP IN TIGHTLY CLOSED CONTAINER IN A COOL AND DRY PLACE, PROTECTED FROM LIGHT. WHEN STORED FOR MORE THAN 24 MONTHS, QUALITY SHOULD BE CHECKED BEFORE USE.

WE BELIEVE THE ABOVE INFORMATION TO BE CORRECT BUT WE DO NOT PRESENT IT AS ALL INCLUSIVE AND AS SUCH SHOULD BE USED AS A GUIDE. IT IS THE SOLE RESPONSIBILITY OF THE RECEIVER OF OUR PRODUCT TO COMPLY WITH EXISTING REGULATIONS AND INSTRUCTIONS.

THIS PRODUCT HAS NOT BEEN FILTERED DUE TO TECHNOLOGICAL REASONS. WE RECOMMEND NOT TO USE IT UNLESS FILTERED WHEN USED AS A RAW MATERIAL IN FOOD INTENDED FOR FINAL CONSUMERS.