

SPECIFICATION SHEET

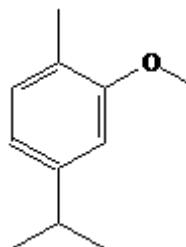
VERSION 1,00 **VERSION DATE** 19/09/22 **PRINT DATE** 28/04/24

PRODUCT CARVACRYL METHYL ETHER
APPLICATIONS Industrial raw material not intended for direct use.
IUPAC NAME 5-ISOPROPYL-2-METHYLANISOLE
SYNONYMS 4-ISOPROPYL-2-METHOXY-1-METHYLBENZENE

FORMULA C11 H16 O
MOLECULAR WEIGHT 164,25
CAS 6379-73-3

EINECS 228-959-2

TARIFF NUMBER 2909309090



REACH REGISTRATION NO. On request. REACH and non-REACH material available for this product.

SPECIFICATIONS

ASPECT AT 20°C	CLEAR MOBILE LIQUID	
COLOUR	COLORLESS TO PALE YELLOW	
ODOUR	HERBACEOUS, SPICY, CITRUSY	
TASTE		
DENSITY AT 20°C (g / ml)	0,935	- 0,939
DENSITY 25/25	0,932	- 0,936
REFRACTIVE INDEX nD20	1,5000	- 1,5060
REFRACTIVE INDEX nD25		-
OPTICAL ROTATION (°)		/
BOILING POINT (°C)	-	
MELTING POINT (°C)		
FLASH POINT (°C)	75,00	
ASSAY (% GC)	> 98	
ACID VALUE (mg KOH/g)	1,0 mg KOH/g	
SOLUBILITY	INSOLUBLE IN WATER	
VAPOUR PRESSURE	NOT DETERMINED	
OTHER SOLUBILITIES	1g SOLUBLE IN 3ml 90% ALCOHOL	

OTHER TECHNICAL DATA

STABILITY AND STORAGE

KEEP IN TIGHTLY CLOSED CONTAINER IN A COOL AND DRY PLACE, PROTECTED FROM LIGHT. WHEN STORED FOR MORE THAN 12 MONTHS, QUALITY SHOULD BE CHECKED BEFORE USE.

WE BELIEVE THE ABOVE INFORMATION TO BE CORRECT BUT WE DO NOT PRESENT IT AS ALL INCLUSIVE AND AS SUCH SHOULD BE USED AS A GUIDE. IT IS THE SOLE RESPONSIBILITY OF THE RECEIVER OF OUR PRODUCT TO COMPLY WITH EXISTING REGULATIONS AND INSTRUCTIONS.

THIS PRODUCT HAS NOT BEEN FILTERED DUE TO TECHNICAL REASONS. WE RECOMMEND NOT TO USE IT UNLESS FILTERED WHEN USED AS A RAW MATERIAL IN FOOD INTENDED FOR FINAL CONSUMERS.