

## SPECIFICATION SHEET

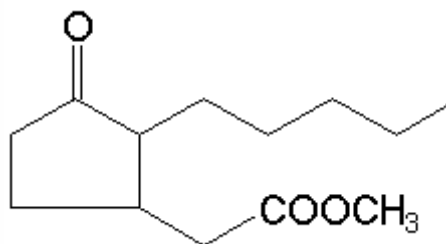
**VERSION** 1,00 **VERSION DATE** 19/09/22 **PRINT DATE** 10/05/24

**PRODUCT** KHARISMAL SUPER PRG® IFF  
**APPLICATIONS** Industrial raw material not intended for direct use.  
**IUPAC NAME** METHYL EPI-DIHYDROJASMONATE  
**SYNONYMS** SUPERCEPIONATE, METHYL EPI-DIHYDROJASMONATE

**FORMULA** C13 H22 O3  
**MOLECULAR WEIGHT** 226,00  
**CAS** 24851-98-7

**EINECS** 246-495-9

**FEMA** 3408  
**TARIFF NUMBER** 2918300090



**REACH REGISTRATION NO.** 01-2119493355-31

## SPECIFICATIONS

<b>ASPECT AT 20°C</b>	CLEAR MOBILE LIQUID	
<b>COLOUR</b>	COLORLESS TO PALE YELLOW	
<b>ODOUR</b>	FLORAL, JASMIN, CITRUS	
<b>TASTE</b>		
<b>DENSITY AT 20°C (g / ml)</b>	1,000	- 1,008
<b>DENSITY 25/25</b>	0,999	- 1,007
<b>REFRACTIVE INDEX nD20</b>	1,4590	- 1,4630
<b>REFRACTIVE INDEX nD25</b>		-
<b>OPTICAL ROTATION (°)</b>		/
<b>BOILING POINT (°C)</b>	> 300	
<b>MELTING POINT (°C)</b>	-	
<b>FLASH POINT (°C)</b>	94,00	
<b>ASSAY (% GC)</b>	CIS >70%; SUM CIS+TRANS >95%	
<b>ACID VALUE (mg KOH/g)</b>	-	
<b>SOLUBILITY</b>	INSOLUBLE IN WATER	
<b>VAPOUR PRESSURE</b>	< 0,01 hPa Calculated	
<b>OTHER SOLUBILITIES</b>	SOLUBLE IN ETHANOL	

## OTHER TECHNICAL DATA

## STABILITY AND STORAGE

KEEP IN TIGHTLY CLOSED CONTAINER IN A COOL AND DRY PLACE, PROTECTED FROM LIGHT. WHEN STORED FOR MORE THAN 36 MONTHS, QUALITY SHOULD BE CHECKED BEFORE USE.  
 IT CONTAINS 0,1% OF STABILIFF (CAS 6386-38-5) AS PRESERVATIVE.

WE BELIEVE THE ABOVE INFORMATION TO BE CORRECT BUT WE DO NOT PRESENT IT AS ALL INCLUSIVE AND AS SUCH SHOULD BE USED AS A GUIDE.  
 IT IS THE SOLE RESPONSIBILITY OF THE RECEIVER OF OUR PRODUCT TO COMPLY WITH EXISTING REGULATIONS AND INSTRUCTIONS.