

SPECIFICATION SHEET

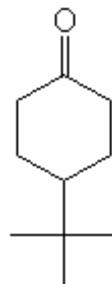
VERSION 1,00 **VERSION DATE** 19/09/22 **PRINT DATE** 17/04/24

PRODUCT IRISONE PCAS
APPLICATIONS Industrial raw material not intended for direct use.
IUPAC NAME 4-TERT-BUTYL-CYCLOHEXANONE
SYNONYMS PARA-(1,1-DIMETHYLETHYL)-CYCLOHEXANONE; PATCHOULI KETONE

FORMULA C₁₀ H₁₈ O
MOLECULAR WEIGHT 154,30
CAS 98-53-3

EINECS 202-678-5

FEMA -
TARIFF NUMBER 2914290090



REACH REGISTRATION NO. 01-2119835880-34

SPECIFICATIONS

ASPECT AT 20°C	CRYSTALLINE POWDER
COLOUR	WHITE TO OFF WHITE
ODOUR	IRIS, WOODY, CAMPHOR, MINTY, PATCHOULI
TASTE	
DENSITY AT 20°C (g / ml)	-
DENSITY 25/25	-
REFRACTIVE INDEX n_D20	-
REFRACTIVE INDEX n_D25	-
OPTICAL ROTATION (°)	/
BOILING POINT (°C)	-
MELTING POINT (°C)	48 APROX.
FLASH POINT (°C)	89,00
ASSAY (% GC)	> 98
ACID VALUE (mg KOH/g)	-
SOLUBILITY	SOLUBILITY IN WATER: 0,59 g/l (20°C)
VAPOUR PRESSURE	NOT DETERMINED
OTHER SOLUBILITIES	SOLUBLE IN ETHANOL

OTHER TECHNICAL DATA FIXATIVE IN IRIS, WOODY NOTES (PATCHOULI, VETIVER)

STABILITY AND STORAGE

KEEP IN TIGHTLY CLOSED CONTAINER IN A COOL AND DRY PLACE, PROTECTED FROM LIGHT. WHEN STORED FOR MORE THAN 24 MONTHS, QUALITY SHOULD BE CHECKED BEFORE USE.

WE BELIEVE THE ABOVE INFORMATION TO BE CORRECT BUT WE DO NOT PRESENT IT AS ALL INCLUSIVE AND AS SUCH SHOULD BE USED AS A GUIDE. IT IS THE SOLE RESPONSIBILITY OF THE RECEIVER OF OUR PRODUCT TO COMPLY WITH EXISTING REGULATIONS AND INSTRUCTIONS.