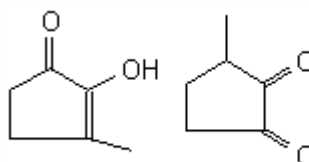


SPECIFICATION SHEET

VERSION 4,00 **VERSION DATE** 19/09/22 **PRINT DATE** 09/05/24

PRODUCT METHYL CYCLOPENTENOLONE
APPLICATIONS Industrial raw material not intended for direct use.
IUPAC NAME 2-HYDROXY-3-METHYL-2-CYCLOPENTENONE
SYNONYMS CYCLOTENE, CORYLONE, KETONAROME, MAPLE LACTONE

FORMULA C6 H8 O2
MOLECULAR WEIGHT 112,00
CAS 80-71-7
CAS 2 765-70-8
EINECS 201-303-2
EINECS 2 212-154-8
FEMA 2700
TARIFF NUMBER 2914409090



ENOL FORM DIKETONE FORM

FOOD GRADE CERTIFICATE AVAILABLE ON REQUEST
REACH REGISTRATION NO. On request. REACH and non-REACH material available for this product.

SPECIFICATIONS

ASPECT AT 20°C	CRYSTALLINE POWDER
COLOUR	WHITE - BEIGE
ODOUR	CARAMEL, SWEET
TASTE	SWEET
DENSITY AT 20°C (g / ml)	-
DENSITY 25/25	-
REFRACTIVE INDEX nD20	-
REFRACTIVE INDEX nD25	-
OPTICAL ROTATION (°)	/
BOILING POINT (°C)	-
MELTING POINT (°C)	104 - 108
FLASH POINT (°C)	110,00
ASSAY (% GC)	> 99
ACID VALUE (mg KOH/g)	-
SOLUBILITY	1 g/72 ml WATER
VAPOUR PRESSURE	NOT DETERMINED
OTHER SOLUBILITIES	1 g/ 5 ml ETHANOL 90%

OTHER TECHNICAL DATA ANHYDROUS QUALITY. MAIN FORM IN THE PURE PRODUCT IS THE ENOL FORM.

STABILITY AND STORAGE

KEEP IN TIGHTLY CLOSED CONTAINER IN A COOL AND DRY PLACE, PROTECTED FROM LIGHT. WHEN STORED FOR MORE THAN 24 MONTHS, QUALITY SHOULD BE CHECKED BEFORE USE.

WE BELIEVE THE ABOVE INFORMATION TO BE CORRECT BUT WE DO NOT PRESENT IT AS ALL INCLUSIVE AND AS SUCH SHOULD BE USED AS A GUIDE. IT IS THE SOLE RESPONSIBILITY OF THE RECEIVER OF OUR PRODUCT TO COMPLY WITH EXISTING REGULATIONS AND INSTRUCTIONS.

THIS PRODUCT HAS NOT BEEN FILTERED DUE TO TECHNICAL REASONS. WE RECOMMEND NOT TO USE IT UNLESS FILTERED WHEN USED AS A RAW MATERIAL IN FOOD INTENDED FOR FINAL CONSUMERS.