

SPECIFICATION SHEET

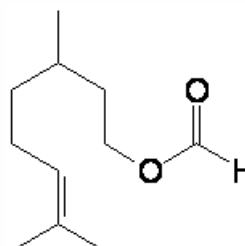
VERSION 2,00 **VERSION DATE** 19/09/22 **PRINT DATE** 12/05/24

PRODUCT CITRONELLYL FORMATE
APPLICATIONS Industrial raw material not intended for direct use.
IUPAC NAME 3,7-DIMETHYL-6-OCTEN-1-YL METHANOATE
SYNONYMS 3,7-DIMETHYL-6-OCTENYL FORMATE

FORMULA C11 H20 O2
MOLECULAR WEIGHT 184,00
CAS 105-85-1

EINECS 203-338-9

FEMA 2314
TARIFF NUMBER 2915130090



FOOD GRADE CERTIFICATE AVAILABLE ON REQUEST
REACH REGISTRATION NO. On request. REACH and non-REACH material available for this product.

SPECIFICATIONS

ASPECT AT 20°C	CLEAR MOBILE LIQUID
COLOUR	COLORLESS TO PALE YELLOW
ODOUR	STRONG, FRUITY, ROSE-LIKE
TASTE	SWEET, FRUITY
DENSITY AT 20°C (g / ml)	0,890 - 0,905
DENSITY 25/25	-
REFRACTIVE INDEX nD20	1,4430 - 1,4490
REFRACTIVE INDEX nD25	-
OPTICAL ROTATION (°)	/
BOILING POINT (°C)	235
MELTING POINT (°C)	
FLASH POINT (°C)	93,00
ASSAY (% GC)	ISOMERS SUM > 90
ACID VALUE (mg KOH/g)	< 3
SOLUBILITY	INSOLUBLE IN WATER
VAPOUR PRESSURE	NOT DETERMINED
OTHER SOLUBILITIES	SOLUBLE IN ETHANOL

OTHER TECHNICAL DATA ALPHA-CITRONELLYL FORMATE 2-15% APPROX. BETA-CITRONELLYL FORMATE 81-93% APPROX. ALPHA-CITRONELLYL FORMATE + BETA-CITRONELLYL FORMATE + CITRONELLOL > 95%. CITRONELLOL < 10%.

STABILITY AND STORAGE

KEEP IN TIGHTLY CLOSED CONTAINER IN A COOL AND DRY PLACE, PROTECTED FROM LIGHT. WHEN STORED FOR MORE THAN 12 MONTHS, QUALITY SHOULD BE CHECKED BEFORE USE.

WE BELIEVE THE ABOVE INFORMATION TO BE CORRECT BUT WE DO NOT PRESENT IT AS ALL INCLUSIVE AND AS SUCH SHOULD BE USED AS A GUIDE. IT IS THE SOLE RESPONSIBILITY OF THE RECEIVER OF OUR PRODUCT TO COMPLY WITH EXISTING REGULATIONS AND INSTRUCTIONS.

THIS PRODUCT HAS NOT BEEN FILTERED DUE TO TECHNICAL REASONS. WE RECOMMEND NOT TO USE IT UNLESS FILTERED WHEN USED AS A RAW MATERIAL IN FOOD INTENDED FOR FINAL CONSUMERS.