

SPECIFICATION SHEET

VERSION 1,00 **VERSION DATE** 19/09/22 **PRINT DATE** 26/04/24

PRODUCT RHODINOL, NATURAL INDESSO 945 (EX-CITRONELLA)

APPLICATIONS Industrial raw material not intended for direct use.

IUPAC NAME RHODINOL

SYNONYMS

PLANT OF ORIGIN Cymbopogon winterlanus

PART OF THE PLANT FRESH OR PARTIALLY DRIED HERB

FORMULA C₁₀ H₂₀ O

MOLECULAR WEIGHT 156,00

CAS 141-25-3

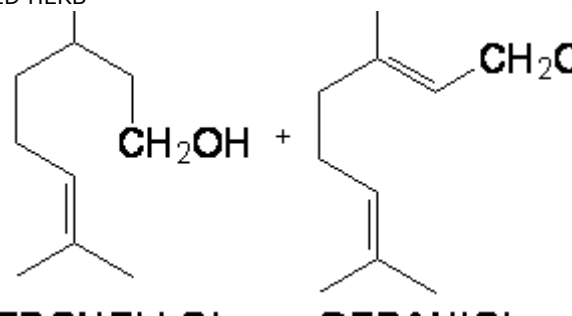
EINECS 205-473-9

FEMA 2980

TARIFF NUMBER 2905220090

FOOD GRADE CERTIFICATE AVAILABLE ON REQUEST

REACH REGISTRATION NO. On request. REACH and non-REACH material available for this product.



SPECIFICATIONS

ASPECT AT 20°C	CLEAR MOBILE LIQUID	
COLOUR	COLORLESS TO PALE YELLOW	
ODOUR	SWEET, ROSY, FLORAL, WAXY, FRESH, CITRUS	
TASTE		
DENSITY AT 20°C (g / ml)	0,875	- 0,908
DENSITY 25/25	0,872	- 0,905
REFRACTIVE INDEX n_{D20}	1,4690	- 1,4820
REFRACTIVE INDEX n_{D25}		-
OPTICAL ROTATION (°)		/
BOILING POINT (°C)	-	
MELTING POINT (°C)	-	
FLASH POINT (°C)	101,00	
ASSAY (% GC)	CITRONELLOL 12-25%; GERANIOL 28-48%	
ACID VALUE (mg KOH/g)	-	
SOLUBILITY	INSOLUBLE IN WATER	
VAPOUR PRESSURE	NOT DETERMINED	
OTHER SOLUBILITIES	SOLUBLE IN ETHANOL	

OTHER TECHNICAL DATA FRACTIONATION OF JAVA CITRONELLA OIL FOLLOWED BY ISOLATION-EXTRACTION PROCESS.

STABILITY AND STORAGE

KEEP IN TIGHTLY CLOSED CONTAINER IN A COOL AND DRY PLACE, PROTECTED FROM LIGHT. WHEN STORED FOR MORE THAN 24 MONTHS, QUALITY SHOULD BE CHECKED BEFORE USE.

WE BELIEVE THE ABOVE INFORMATION TO BE CORRECT BUT WE DO NOT PRESENT IT AS ALL INCLUSIVE AND AS SUCH SHOULD BE USED AS A GUIDE. IT IS THE SOLE RESPONSIBILITY OF THE RECEIVER OF OUR PRODUCT TO COMPLY WITH EXISTING REGULATIONS AND INSTRUCTIONS.

THIS PRODUCT HAS NOT BEEN FILTERED DUE TO TECHNICAL REASONS. WE RECOMMEND NOT TO USE IT UNLESS FILTERED WHEN USED AS A RAW MATERIAL IN FOOD INTENDED FOR FINAL CONSUMERS.