

SPECIFICATION SHEET

VERSION 1,00 **VERSION DATE** 19/09/22 **PRINT DATE** 25/04/24

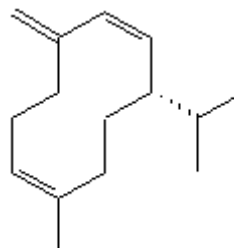
PRODUCT GERMACRENE-D NATURAL 85 BIOTECH
APPLICATIONS Industrial raw material not intended for direct use.
IUPAC NAME (1E,6E,8S)-1-METHYL-5-METHYLDIENE-8-PROPAN-2-YLCYCLODECA-1,6-DIENE
SYNONYMS

PLANT OF ORIGIN
PART OF THE PLANT

FORMULA C15 H24
MOLECULAR WEIGHT 204,40
CAS 23986-74-5

EINECS 639-624-9

TARIFF NUMBER 2902190000
KOSHER CERTIFICATE AVAILABLE ON REQUEST
FOOD GRADE CERTIFICATE AVAILABLE ON REQUEST
REACH REGISTRATION NO. Exempt from registration (imported/manufactured < 1 ton/year)



SPECIFICATIONS

ASPECT AT 20°C	CLEAR MOBILE LIQUID	
COLOUR	COLORLESS TO PALE YELLOW	
ODOUR	FLORAL, SOAPY, GREEN	
TASTE		
DENSITY AT 20°C (g / ml)	0,860	- 0,900
DENSITY 25/25	-	
REFRACTIVE INDEX nD20	1,4730	- 1,5490
REFRACTIVE INDEX nD25	-	
OPTICAL ROTATION (°)	/	
BOILING POINT (°C)	308	
MELTING POINT (°C)	-	
FLASH POINT (°C)	112,00	
ASSAY (% GC)	> 85	
ACID VALUE (mg KOH/g)	-	
SOLUBILITY	NEARLY INSOLUBLE IN WATER.	
VAPOUR PRESSURE	NOT DETERMINED	
OTHER SOLUBILITIES	SOLUBLE IN ETHANOL, TRIACETIN AND ESSENTIAL OILS.	

OTHER TECHNICAL DATA IT MAY FORM POLYMERIC BY-PRODUCTS DURING STORAGE.

STABILITY AND STORAGE

KEEP IN TIGHTLY CLOSED CONTAINER IN A COOL AND DRY PLACE, PROTECTED FROM LIGHT. WHEN STORED FOR MORE THAN 12 MONTHS, QUALITY SHOULD BE CHECKED BEFORE USE.

RECOMMENDED STORAGE TEMPERATURE: 0-4°C. CONTAINS 0,1% TOCOPHEROL NAT. PURGE HEADSPACE WITH NITROGEN.

WE BELIEVE THE ABOVE INFORMATION TO BE CORRECT BUT WE DO NOT PRESENT IT AS ALL INCLUSIVE AND AS SUCH SHOULD BE USED AS A GUIDE. IT IS THE SOLE RESPONSIBILITY OF THE RECEIVER OF OUR PRODUCT TO COMPLY WITH EXISTING REGULATIONS AND INSTRUCTIONS.

THIS PRODUCT HAS NOT BEEN FILTERED DUE TO TECHNICAL REASONS. WE RECOMMEND NOT TO USE IT UNLESS FILTERED WHEN USED AS A RAW MATERIAL IN FOOD INTENDED FOR FINAL CONSUMERS.