

SPECIFICATION SHEET

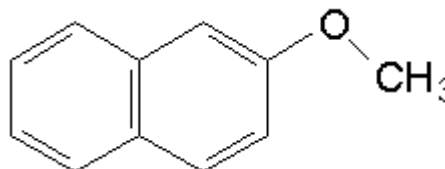
VERSION 2,00 **VERSION DATE** 21/11/23 **PRINT DATE** 09/05/24

PRODUCT NEROLIN YARA YARA (CRYSTALLIZED IN ETHANOL)
APPLICATIONS Industrial raw material not intended for direct use.
IUPAC NAME 2-METHOXYNAPHTALENE
SYNONYMS BETA-NAPHTHYL METHYL ETHER

FORMULA C11 H10 O
MOLECULAR WEIGHT 158,00
CAS 93-04-9

EINECS 202-213-6

FEMA 4704
TARIFF NUMBER 2909309090



REACH REGISTRATION NO. On request. REACH and non-REACH material available for this product.

SPECIFICATIONS

ASPECT AT 20°C	CRYSTALLINE SOLID
COLOUR	WHITE
ODOUR	SWEET, FLORAL
TASTE	
DENSITY AT 20°C (g / ml)	-
DENSITY 25/25	-
REFRACTIVE INDEX nD20	-
REFRACTIVE INDEX nD25	-
OPTICAL ROTATION (°)	/
BOILING POINT (°C)	274°C (760 mmHg)
MELTING POINT (°C)	71,5-75°C
FLASH POINT (°C)	101,00
ASSAY (% GC)	> 99
ACID VALUE (mg KOH/g)	-
SOLUBILITY	INSOLUBLE IN WATER
VAPOUR PRESSURE	NOT DETERMINED
OTHER SOLUBILITIES	SOLUBLE IN ETHANOL

OTHER TECHNICAL DATA THIS QUALITY HAS BEEN CRYSTALLIZED WITH ETHANOL.

STABILITY AND STORAGE

KEEP IN TIGHTLY CLOSED CONTAINER IN A COOL AND DRY PLACE, PROTECTED FROM LIGHT. WHEN STORED FOR MORE THAN 24 MONTHS, QUALITY SHOULD BE CHECKED BEFORE USE.

WE BELIEVE THE ABOVE INFORMATION TO BE CORRECT BUT WE DO NOT PRESENT IT AS ALL INCLUSIVE AND AS SUCH SHOULD BE USED AS A GUIDE. IT IS THE SOLE RESPONSIBILITY OF THE RECEIVER OF OUR PRODUCT TO COMPLY WITH EXISTING REGULATIONS AND INSTRUCTIONS.

THIS PRODUCT HAS NOT BEEN FILTERED DUE TO TECHNICAL REASONS. WE RECOMMEND NOT TO USE IT UNLESS FILTERED WHEN USED AS A RAW MATERIAL IN FOOD INTENDED FOR FINAL CONSUMERS.