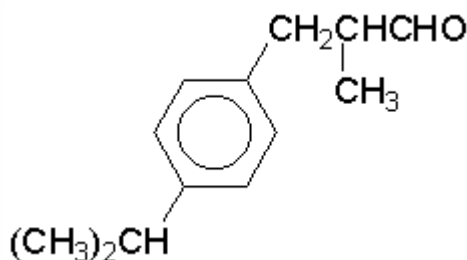


SPECIFICATION SHEET

VERSION 9,00 **VERSION DATE** 19/09/22 **PRINT DATE** 20/04/24

PRODUCT	CYCLAMEN ALDEHYDE EXTRA
APPLICATIONS	Industrial raw material not intended for direct use.
IUPAC NAME	2-METHYL-3-(PARA-ISOPROPYLPHENYL)-PROPIONALDEHYDE
SYNONYMS	2-METHYL-3-(PARA-ISOPROPYLPHENYL)-PROPIONALDEHYDE
FORMULA	C13 H18 O
MOLECULAR WEIGHT	190,28
CAS	103-95-7
EINECS	203-161-7
FEMA	2743
TARIFF NUMBER	2912290090
KOSHER CERTIFICATE	AVAILABLE ON REQUEST
FOOD GRADE CERTIFICATE	AVAILABLE ON REQUEST
REACH REGISTRATION NO.	01-2119970582-32



SPECIFICATIONS

ASPECT AT 20°C	CLEAR MOBILE LIQUID
COLOUR	COLORLESS TO PALE YELLOW
ODOUR	FLORAL, LILY OF THE VALLEY, CYCLAMEN
TASTE	
DENSITY AT 20°C (g / ml)	0,946 - 0,950
DENSITY 25/25	0,945 - 0,949
REFRACTIVE INDEX nD20	1,5030 - 1,5070
REFRACTIVE INDEX nD25	1,5010 - 1,5050
OPTICAL ROTATION (°)	/
BOILING POINT (°C)	234 (1013 hPa)
MELTING POINT (°C)	< -50°C
FLASH POINT (°C)	75,00
ASSAY (% GC)	PARA >95; ORTO <5; SUM >98. CYCLAMEN ALCOHOL <1,5
ACID VALUE (mg KOH/g)	< 2
SOLUBILITY	PRACTICALLY INSOLUBLE IN WATER: 61 mg/l
VAPOUR PRESSURE	0.0053 hPa (20°C)
OTHER SOLUBILITIES	SOLUBLE IN ETHANOL

OTHER TECHNICAL DATA

STABILITY AND STORAGE

KEEP IN TIGHTLY CLOSED CONTAINER IN A COOL AND DRY PLACE, PROTECTED FROM LIGHT. WHEN STORED FOR MORE THAN 15 MONTHS, QUALITY SHOULD BE CHECKED BEFORE USE.
IT CONTAINS 0,004% OF CITRIC ACID AND 0,02% OF TOCOPHEROL. PURGE HEADSPACE WITH NITROGEN.

WE BELIEVE THE ABOVE INFORMATION TO BE CORRECT BUT WE DO NOT PRESENT IT AS ALL INCLUSIVE AND AS SUCH SHOULD BE USED AS A GUIDE.
IT IS THE SOLE RESPONSIBILITY OF THE RECEIVER OF OUR PRODUCT TO COMPLY WITH EXISTING REGULATIONS AND INSTRUCTIONS.

THIS PRODUCT HAS NOT BEEN FILTERED DUE TO TECHNICAL REASONS. WE RECOMMEND NOT TO USE IT UNLESS FILTERED WHEN USED AS A RAW MATERIAL IN FOOD INTENDED FOR FINAL CONSUMERS.