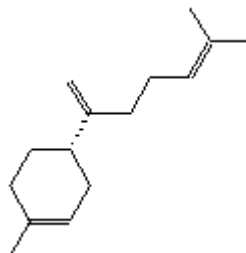


SPECIFICATION SHEET

VERSION	1,00	VERSION DATE	19/09/22	PRINT DATE	17/04/24
PRODUCT	BETA-BISABOLENE 90% BIOTECH				
APPLICATIONS	Industrial raw material not intended for direct use.				
IUPAC NAME	(S)-1-METHYL-4-(5-METHYL-1-METHYLENE-4-HEXENYL)CICLOHEXENE				
SYNONYMS					
PLANT OF ORIGIN					
PART OF THE PLANT					
FORMULA	C ₁₅ H ₂₄				
MOLECULAR WEIGHT	204,40				
CAS	495-61-4				
EINECS	610-461-5				
FEMA	4940				
TARIFF NUMBER	2902190000				
FOOD GRADE CERTIFICATE	AVAILABLE ON REQUEST				
REACH REGISTRATION NO.	Exempt from registration (imported/manufactured < 1 ton/year)				



SPECIFICATIONS

ASPECT AT 20°C	CLEAR MOBILE LIQUID	
COLOUR	COLORLESS TO PALE YELLOW	
ODOUR	CITRUS-LIKE, GREEN, FLOWERY	
TASTE		
DENSITY AT 20°C (g / ml)	0,830	- 0,890
DENSITY 25/25	-	
REFRACTIVE INDEX n_D20	1,4850	- 1,5150
REFRACTIVE INDEX n_D25	-	
OPTICAL ROTATION (°)	/	
BOILING POINT (°C)	270-274	
MELTING POINT (°C)	-	
FLASH POINT (°C)	92,00	
ASSAY (% GC)	> 90	
ACID VALUE (mg KOH/g)	-	
SOLUBILITY	PRACTICALLY INSOLUBLE IN WATER	
VAPOUR PRESSURE	NOT DETERMINED	
OTHER SOLUBILITIES	SOLUBLE IN ETHANOL, TRIACETIN AND OILS	

OTHER TECHNICAL DATA

STABILITY AND STORAGE

KEEP IN TIGHTLY CLOSED CONTAINER IN A COOL AND DRY PLACE, PROTECTED FROM LIGHT. WHEN STORED FOR MORE THAN 24 MONTHS, QUALITY SHOULD BE CHECKED BEFORE USE.
STORAGE TEMPERATURE RECOMMENDED: 2-8°C. PURGE HEADSPACE WITH NITROGEN.

WE BELIEVE THE ABOVE INFORMATION TO BE CORRECT BUT WE DO NOT PRESENT IT AS ALL INCLUSIVE AND AS SUCH SHOULD BE USED AS A GUIDE. IT IS THE SOLE RESPONSIBILITY OF THE RECEIVER OF OUR PRODUCT TO COMPLY WITH EXISTING REGULATIONS AND INSTRUCTIONS.

THIS PRODUCT HAS NOT BEEN FILTERED DUE TO TECHNICAL REASONS. WE RECOMMEND NOT TO USE IT UNLESS FILTERED WHEN USED AS A RAW MATERIAL IN FOOD INTENDED FOR FINAL CONSUMERS.