

## SPECIFICATION SHEET

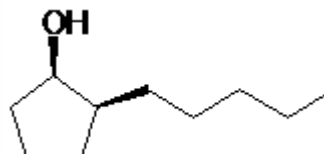
**VERSION** 1,00 **VERSION DATE** 19/09/22 **PRINT DATE** 28/04/24

**PRODUCT** DELPHOL® HC FIRMENICH 937165  
**APPLICATIONS** Industrial raw material not intended for direct use.  
**IUPAC NAME** 2-PENTYLCYCLOPENTAN-1-OL  
**SYNONYMS** CYCLOPENTANOL

**FORMULA** C10 H20 O  
**MOLECULAR WEIGHT** 156,00  
**CAS** 84560-00-9

**EINECS** 283-187-3

**FEMA** -  
**TARIFF NUMBER** 2906190090



**REACH REGISTRATION NO.** 01-2120121430-77

## SPECIFICATIONS

<b>ASPECT AT 20°C</b>	CLEAR MOBILE LIQUID	
<b>COLOUR</b>	COLORLESS	
<b>ODOUR</b>	FLORAL, JASMIN, CIS-JASMONE, MAGNOLIA	
<b>TASTE</b>		
<b>DENSITY AT 20°C (g / ml)</b>	0,893	- 0,899
<b>DENSITY 25/25</b>	-	
<b>REFRACTIVE INDEX nD20</b>	1,4570	- 1,4610
<b>REFRACTIVE INDEX nD25</b>	-	
<b>OPTICAL ROTATION (°)</b>	/	
<b>BOILING POINT (°C)</b>	222	
<b>MELTING POINT (°C)</b>	-	
<b>FLASH POINT (°C)</b>	95,00	
<b>ASSAY (% GC)</b>	> 95	
<b>ACID VALUE (mg KOH/g)</b>		
<b>SOLUBILITY</b>	INSOLUBLE IN WATER	
<b>VAPOUR PRESSURE</b>	11,96 Pa (20°C)	
<b>OTHER SOLUBILITIES</b>	SOLUBLE IN ETHANOL	

### OTHER TECHNICAL DATA

FLORAL, JASMIN, SLIGHT CIS-JASMONE NOTE. REMINISCENT OF MAGNOLIA AND TEA WITH A SLIGHT FRUITY UNDERTONE. EXCELLENT IN FLORAL AND FRUIT FRAGRANCES. ENRICHES THE FAMILY OF WHITE FLORAL NOTES. EXCELLENT STABILITY. TENACITY: 2 DAYS ON A BLOTTER.

## STABILITY AND STORAGE

KEEP IN TIGHTLY CLOSED CONTAINER IN A COOL AND DRY PLACE, PROTECTED FROM LIGHT. WHEN STORED FOR MORE THAN 24 MONTHS, QUALITY SHOULD BE CHECKED BEFORE USE.

WE BELIEVE THE ABOVE INFORMATION TO BE CORRECT BUT WE DO NOT PRESENT IT AS ALL INCLUSIVE AND AS SUCH SHOULD BE USED AS A GUIDE. IT IS THE SOLE RESPONSIBILITY OF THE RECEIVER OF OUR PRODUCT TO COMPLY WITH EXISTING REGULATIONS AND INSTRUCTIONS.