

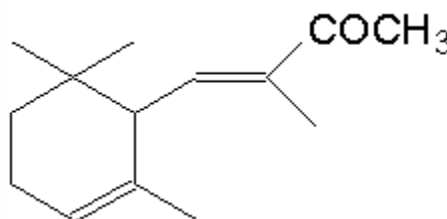
## SPECIFICATION SHEET

**VERSION** 1,00 **VERSION DATE** 21/01/21 **PRINT DATE** 18/05/24

**PRODUCT** METHYLIONONE GAMMA  
**APPLICATIONS** Industrial raw material not intended for direct use.  
**IUPAC NAME** 3-BUTEN-2-ONE,3-METHYL-4-(2,6,6-TRIMETHYL-2-CYCLOHEXEN-1-YL)  
**SYNONYMS** ISO-ALPHA-METHYL IONONE

**FORMULA** C14 H22 O  
**MOLECULAR WEIGHT** 206,00  
**CAS** 127-51-0  
**CAS 2** 1335-46-2  
**EINECS** 215-635-0

**FEMA** 2714  
**TARIFF NUMBER** 2914230000  
**KOSHER CERTIFICATE** AVAILABLE ON REQUEST



**REACH REGISTRATION NO.** 01-2119471851-35

## SPECIFICATIONS

<b>ASPECT AT 20°C</b>	CLEAR MOBILE LIQUID	
<b>COLOUR</b>	PALE YELLOW TO YELLOW	
<b>ODOUR</b>	WOODY, VIOLET	
<b>TASTE</b>		
<b>DENSITY AT 20°C (g / ml)</b>	0,928	- 0,932
<b>DENSITY 25/25</b>	0,927	- 0,931
<b>REFRACTIVE INDEX nD20</b>	1,4980	- 1,5020
<b>REFRACTIVE INDEX nD25</b>		-
<b>OPTICAL ROTATION (°)</b>		/
<b>BOILING POINT (°C)</b>	-	
<b>MELTING POINT (°C)</b>	-	
<b>FLASH POINT (°C)</b>	94,00	
<b>ASSAY (% GC)</b>	ISOMERS SUM > 95%. IONONE ISO-METHYL ALPHA: 54-60%	
<b>ACID VALUE (mg KOH/g)</b>	-	
<b>SOLUBILITY</b>	INSOLUBLE IN WATER	
<b>VAPOUR PRESSURE</b>	0,02 hPa	
<b>OTHER SOLUBILITIES</b>	SOLUBLE IN ETHANOL	

## OTHER TECHNICAL DATA

## STABILITY AND STORAGE

KEEP IN TIGHTLY CLOSED CONTAINER IN A COOL AND DRY PLACE, PROTECTED FROM LIGHT. WHEN STORED FOR MORE THAN 24 MONTHS, QUALITY SHOULD BE CHECKED BEFORE USE.  
 CONTAINS 0,15% ALPHA-TOCOPHEROL

WE BELIEVE THE ABOVE INFORMATION TO BE CORRECT BUT WE DO NOT PRESENT IT AS ALL INCLUSIVE AND AS SUCH SHOULD BE USED AS A GUIDE.  
 IT IS THE SOLE RESPONSIBILITY OF THE RECEIVER OF OUR PRODUCT TO COMPLY WITH EXISTING REGULATIONS AND INSTRUCTIONS.