

SPECIFICATION SHEET

VERSION 1,00 **VERSION DATE** 19/09/22 **PRINT DATE** 23/07/24

PRODUCT TERPINOLENE NATURAL EU BESTALLY
APPLICATIONS Industrial raw material not intended for direct use.
IUPAC NAME P-MENTH-1,4(8)-DIENE
SYNONYMS ALPHA-TERPINOLENE; 1-METHYL-4-ISOPROPYLIDENE-1-CYCLOHEXENE

PLANT OF ORIGIN Melaleuca leucadendron L.

PART OF THE PLANT

FORMULA C10 H16

MOLECULAR WEIGHT 136,00

CAS 586-62-9

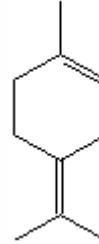
EINECS 209-578-0

FEMA 3046

TARIFF NUMBER 2902190000

FOOD GRADE CERTIFICATE AVAILABLE ON REQUEST

REACH REGISTRATION NO. On request. REACH and non-REACH material available for this product.



SPECIFICATIONS

ASPECT AT 20°C	CLEAR MOBILE LIQUID	
COLOUR	COLORLESS TO PALE YELLOW	
ODOUR	SWEET, PINE	
TASTE		
DENSITY AT 20°C (g / ml)	0,855	- 0,863
DENSITY 25/25	-	
REFRACTIVE INDEX nD20	1,4840	- 1,4900
REFRACTIVE INDEX nD25	-	
OPTICAL ROTATION (°)	/	
BOILING POINT (°C)	183 - 185	
MELTING POINT (°C)	-	
FLASH POINT (°C)	60,00	
ASSAY (% GC)	> 95	
ACID VALUE (mg KOH/g)	-	
SOLUBILITY	INSOLUBLE IN WATER	
VAPOUR PRESSURE	0,7 hPA (20°C)	
OTHER SOLUBILITIES	SOLUBLE IN ETHANOL	

OTHER TECHNICAL DATA

STABILITY AND STORAGE

KEEP IN TIGHTLY CLOSED CONTAINER IN A COOL AND DRY PLACE, PROTECTED FROM LIGHT. WHEN STORED FOR MORE THAN 24 MONTHS, QUALITY SHOULD BE CHECKED BEFORE USE.
 PURGE HEADSPACE WITH NITROGEN.

WE BELIEVE THE ABOVE INFORMATION TO BE CORRECT BUT WE DO NOT PRESENT IT AS ALL INCLUSIVE AND AS SUCH SHOULD BE USED AS A GUIDE. IT IS THE SOLE RESPONSIBILITY OF THE RECEIVER OF OUR PRODUCT TO COMPLY WITH EXISTING REGULATIONS AND INSTRUCTIONS.

THIS PRODUCT HAS NOT BEEN FILTERED DUE TO TECHNICAL REASONS. WE RECOMMEND NOT TO USE IT UNLESS FILTERED WHEN USED AS A RAW MATERIAL IN FOOD INTENDED FOR FINAL CONSUMERS.