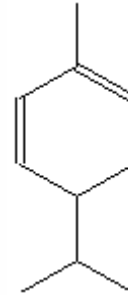


## SPECIFICATION SHEET

**VERSION** 1,00      **VERSION DATE** 19/09/22      **PRINT DATE** 03/07/24

**PRODUCT** PHELLANDRENE, ALPHA NATURAL EX-GLOBULUS  
**APPLICATIONS** Industrial raw material not intended for direct use.  
**IUPAC NAME** 4-ISOPROPYL-1-METHYL-1,5-CYCLOHEXADIENE  
**SYNONYMS** 1,5-P-MENTHADIENE, PIVAROSE

**PLANT OF ORIGIN** Eucalyptus globulus  
**PART OF THE PLANT** LEAVES AND STEM  
**FORMULA** C10 H16  
**MOLECULAR WEIGHT** 136,00  
**CAS** 4221-98-1  
**CAS 2** 99-83-2  
**EINECS** 224-167-6  
**EINECS 2** 202-792-5



**TARIFF NUMBER** 2902190000  
**KOSHER CERTIFICATE** AVAILABLE ON REQUEST  
**FOOD GRADE CERTIFICATE** AVAILABLE ON REQUEST  
**REACH REGISTRATION NO.** Exempt from registration (imported/manufactured < 1 ton/year)

### SPECIFICATIONS

**ASPECT AT 20°C** CLEAR MOBILE LIQUID  
**COLOUR** COLORLESS  
**ODOUR** CITRUS, LIME, PEPPER, JUNIPER  
**TASTE**  
**DENSITY AT 20°C (g / ml)** 0,835 - 0,845  
**DENSITY 25/25** -  
**REFRACTIVE INDEX nD20** 1,4650 - 1,4750  
**REFRACTIVE INDEX nD25** -  
**OPTICAL ROTATION (°)** 30,00 / 50,00  
**BOILING POINT (°C)** 173 - 176  
**MELTING POINT (°C)**  
**FLASH POINT (°C)** 53,00  
**ASSAY (% GC)** > 85  
**ACID VALUE (mg KOH/g)** -  
**SOLUBILITY** SOLUBLE IN ALCOHOL 90%  
**VAPOUR PRESSURE** NOT DETERMINED  
**OTHER SOLUBILITIES** SOLUBLE IN ETHANOL

**OTHER TECHNICAL DATA** CIMENE AND OTHER TERPENE HYDROCARBONS: 10-12%.

### STABILITY AND STORAGE

KEEP IN TIGHTLY CLOSED CONTAINER IN A COOL AND DRY PLACE, PROTECTED FROM LIGHT. WHEN STORED FOR MORE THAN 24 MONTHS, QUALITY SHOULD BE CHECKED BEFORE USE.

WE BELIEVE THE ABOVE INFORMATION TO BE CORRECT BUT WE DO NOT PRESENT IT AS ALL INCLUSIVE AND AS SUCH SHOULD BE USED AS A GUIDE. IT IS THE SOLE RESPONSIBILITY OF THE RECEIVER OF OUR PRODUCT TO COMPLY WITH EXISTING REGULATIONS AND INSTRUCTIONS.

THIS PRODUCT HAS NOT BEEN FILTERED DUE TO TECHNICAL REASONS. WE RECOMMEND NOT TO USE IT UNLESS FILTERED WHEN USED AS A RAW MATERIAL IN FOOD INTENDED FOR FINAL CONSUMERS.