

## SPECIFICATION SHEET

**VERSION** 2,00 **VERSION DATE** 26/05/21 **PRINT DATE** 03/07/24

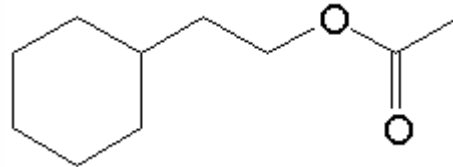
**PRODUCT** CYCLOHEXYL ETHYL ACETATE IFF  
**APPLICATIONS** Industrial raw material not intended for direct use.  
**IUPAC NAME** CYCLOHEXYL ETHYL ACETATE  
**SYNONYMS** CYCLOHEXANETHANYL ACETATE, LAVANDONAT

**FORMULA** C10 H18 O2  
**MOLECULAR WEIGHT** 170,00  
**CAS** 21722-83-8

**EINECS** 244-543-3

**TARIFF NUMBER** 2915390090

**REACH REGISTRATION NO.** 01-2120786926-33



## SPECIFICATIONS

|                                 |                      |
|---------------------------------|----------------------|
| <b>ASPECT AT 20°C</b>           | CLEAR MOBILE LIQUID  |
| <b>COLOUR</b>                   | COLORLESS            |
| <b>ODOUR</b>                    | FRUITY, SWEET, CANDY |
| <b>TASTE</b>                    |                      |
| <b>DENSITY AT 20°C (g / ml)</b> | 0,946 - 0,952        |
| <b>DENSITY 25/25</b>            | -                    |
| <b>REFRACTIVE INDEX nD20</b>    | 1,4450 - 1,4490      |
| <b>REFRACTIVE INDEX nD25</b>    | -                    |
| <b>OPTICAL ROTATION (°)</b>     | /                    |
| <b>BOILING POINT (°C)</b>       | -                    |
| <b>MELTING POINT (°C)</b>       |                      |
| <b>FLASH POINT (°C)</b>         | 79,00                |
| <b>ASSAY (% GC)</b>             | > 98                 |
| <b>ACID VALUE (mg KOH/g)</b>    | -                    |
| <b>SOLUBILITY</b>               | INSOLUBLE IN WATER   |
| <b>VAPOUR PRESSURE</b>          | 0,0115 calc. (kPa)   |
| <b>OTHER SOLUBILITIES</b>       | SOLUBLE IN ETHANOL   |

## OTHER TECHNICAL DATA

## STABILITY AND STORAGE

KEEP IN TIGHTLY CLOSED CONTAINER IN A COOL AND DRY PLACE, PROTECTED FROM LIGHT. WHEN STORED FOR MORE THAN 24 MONTHS, QUALITY SHOULD BE CHECKED BEFORE USE.

WE BELIEVE THE ABOVE INFORMATION TO BE CORRECT BUT WE DO NOT PRESENT IT AS ALL INCLUSIVE AND AS SUCH SHOULD BE USED AS A GUIDE. IT IS THE SOLE RESPONSIBILITY OF THE RECEIVER OF OUR PRODUCT TO COMPLY WITH EXISTING REGULATIONS AND INSTRUCTIONS.