

## SPECIFICATION SHEET

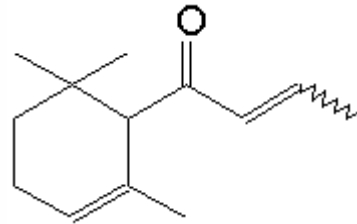
**VERSION** 1,00 **VERSION DATE** 29/03/12 **PRINT DATE** 04/07/24

**PRODUCT** DAMASCONE ALPHA  
**APPLICATIONS** Industrial raw material not intended for direct use.  
**IUPAC NAME** (E)-1-(2,6,6-TRIMETHYL-2-CYCLOHEXEN-1-YL)-2-BUTEN-1-ONE  
**SYNONYMS**

**FORMULA** C13 H20 O  
**MOLECULAR WEIGHT** 192,00  
**CAS** 24720-09-0

**EINECS** 246-430-4

**FEMA** 3659  
**TARIFF NUMBER** 2914290090



**REACH REGISTRATION NO.** On request. REACH and non-REACH material available for this product.

## SPECIFICATIONS

<b>ASPECT AT 20°C</b>	CLEAR MOBILE LIQUID
<b>COLOUR</b>	COLORLESS TO PALE YELLOW
<b>ODOUR</b>	DIFFUSIVE, FLORAL, ROSY, FRUITY, APPLE
<b>TASTE</b>	
<b>DENSITY AT 20°C (g / ml)</b>	0,932 - 0,938
<b>DENSITY 25/25</b>	0,929 - 0,935
<b>REFRACTIVE INDEX nD20</b>	1,4940 - 1,4980
<b>REFRACTIVE INDEX nD25</b>	-
<b>OPTICAL ROTATION (°)</b>	/
<b>BOILING POINT (°C)</b>	250 °C (101325 Pa)
<b>MELTING POINT (°C)</b>	4 °C
<b>FLASH POINT (°C)</b>	94,00
<b>ASSAY (% GC)</b>	CIS 1-10%; TRANS >90%; SUM OF ISOMERS > 95%
<b>ACID VALUE (mg KOH/g)</b>	< 1
<b>SOLUBILITY</b>	INSOLUBLE IN WATER
<b>VAPOUR PRESSURE</b>	3,2 Pa (25°C)
<b>OTHER SOLUBILITIES</b>	SOLUBLE IN ETHANOL

## OTHER TECHNICAL DATA

## STABILITY AND STORAGE

KEEP IN TIGHTLY CLOSED CONTAINER IN A COOL AND DRY PLACE, PROTECTED FROM LIGHT. WHEN STORED FOR MORE THAN 24 MONTHS, QUALITY SHOULD BE CHECKED BEFORE USE.  
IT MAY BE STABILIZED WITH 0,05% DE ALPHA-TOCOPHEROL (VITAMIN E - E307)

WE BELIEVE THE ABOVE INFORMATION TO BE CORRECT BUT WE DO NOT PRESENT IT AS ALL INCLUSIVE AND AS SUCH SHOULD BE USED AS A GUIDE.  
IT IS THE SOLE RESPONSIBILITY OF THE RECEIVER OF OUR PRODUCT TO COMPLY WITH EXISTING REGULATIONS AND INSTRUCTIONS.

THIS PRODUCT HAS NOT BEEN FILTERED DUE TO TECHNICAL REASONS. WE RECOMMEND NOT TO USE IT UNLESS FILTERED WHEN USED AS A RAW MATERIAL IN FOOD INTENDED FOR FINAL CONSUMERS.