

SPECIFICATION SHEET

VERSION 6,00 **VERSION DATE** 19/09/22 **PRINT DATE** 03/07/24

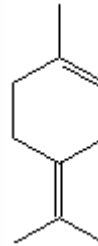
PRODUCT TERPINOLENE RECTIFIED IFF
APPLICATIONS Industrial raw material not intended for direct use.
IUPAC NAME 1-METHYL-4-(1-METHYLETHYLIDENE)-CYCLOHEXENE
SYNONYMS TERPINOLENE 30

FORMULA C10 H16
MOLECULAR WEIGHT 136,10
CAS 586-62-9

EINECS 209-578-0

TARIFF NUMBER 2902190000

REACH REGISTRATION NO. 01-2119982324-34-0001



SPECIFICATIONS

ASPECT AT 20°C CLEAR MOBILE LIQUID
COLOUR COLORLESS TO PALE YELLOW
ODOUR PINE
TASTE
DENSITY AT 20°C (g / ml) 0,876 - 0,886
DENSITY 25/25 0,875 - 0,885
REFRACTIVE INDEX nD20 1,4690 - 1,4790
REFRACTIVE INDEX nD25 -
OPTICAL ROTATION (°) /
BOILING POINT (°C) -
MELTING POINT (°C) -
FLASH POINT (°C) 47,00
ASSAY (% GC) TERPINOLENE 20-36%;LIMONENE 6-16%;EUCALYPTOL 5-11%
ACID VALUE (mg KOH/g)
SOLUBILITY NEARLY INSOLUBLE IN WATER
VAPOUR PRESSURE NOT DETERMINED
OTHER SOLUBILITIES SOLUBLE IN ETHANOL

OTHER TECHNICAL DATA PEROXIDE INDEX < 10 mmol/L

STABILITY AND STORAGE

KEEP IN TIGHTLY CLOSED CONTAINER IN A COOL AND DRY PLACE, PROTECTED FROM LIGHT. WHEN STORED FOR MORE THAN 24 MONTHS, QUALITY SHOULD BE CHECKED BEFORE USE.
IT CONTAINS 0,025% OF BHT. PURGE HEADSPACE WITH NITROGEN.

WE BELIEVE THE ABOVE INFORMATION TO BE CORRECT BUT WE DO NOT PRESENT IT AS ALL INCLUSIVE AND AS SUCH SHOULD BE USED AS A GUIDE.
IT IS THE SOLE RESPONSIBILITY OF THE RECEIVER OF OUR PRODUCT TO COMPLY WITH EXISTING REGULATIONS AND INSTRUCTIONS.