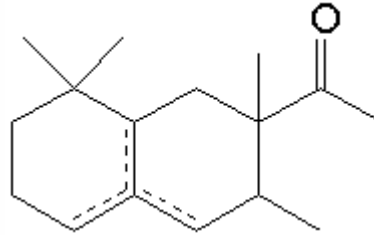


SPECIFICATION SHEET

VERSION 5,00 **VERSION DATE** 19/09/22 **PRINT DATE** 04/07/24

PRODUCT ISO E SUPER® IFF
APPLICATIONS Industrial raw material not intended for direct use.
IUPAC NAME 7-ACETYL-1,2,3,4,5,6,7,8-OCTAHYDRO-1,1,6,7-TETRAMETHYLNAPHTHALENE
SYNONYMS METHYL CYCLOMYRCETONE, ISO E SUPER, AMBOISE, ORBITONE, ISOCYCLEMONE

FORMULA C16 H26 O
MOLECULAR WEIGHT 234,40
CAS 54464-57-2
CAS 2 68155-66-8
EINECS 259-174-3
EINECS 2 268-978-3



TARIFF NUMBER 2914290090

REACH REGISTRATION NO. 01-2119489989-04

SPECIFICATIONS

ASPECT AT 20°C SLIGHT VISCOUS CLEAR LIQUID
COLOUR COLORLESS-PALE YELLOW
ODOUR WOODY, FLORAL, AMBERGRIS
TASTE
DENSITY AT 20°C (g / ml) 0,961 - 0,967
DENSITY 25/25 0,960 - 0,966
REFRACTIVE INDEX nD20 1,4970 - 1,5010
REFRACTIVE INDEX nD25 -
OPTICAL ROTATION (°) /
BOILING POINT (°C) 290°C (typ. anal.)
MELTING POINT (°C) -
FLASH POINT (°C) 110,00
ASSAY (% GC) ALPHA10-20;BETA55-65;GAMMA8-16;CHARM1,5-4;SECT.>90
ACID VALUE (mg KOH/g)
SOLUBILITY SOLUBILITY IN WATER: 2,000 at 20 °C
VAPOUR PRESSURE 0,0002 calculated
OTHER SOLUBILITIES SOLUBLE IN ETHANOL

OTHER TECHNICAL DATA

STABILITY AND STORAGE

KEEP IN TIGHTLY CLOSED CONTAINER IN A COOL AND DRY PLACE, PROTECTED FROM LIGHT. WHEN STORED FOR MORE THAN 24 MONTHS, QUALITY SHOULD BE CHECKED BEFORE USE.
STABILIZED WITH 0,1% BHT. KEEP BETWEEN 8-10°C.

WE BELIEVE THE ABOVE INFORMATION TO BE CORRECT BUT WE DO NOT PRESENT IT AS ALL INCLUSIVE AND AS SUCH SHOULD BE USED AS A GUIDE. IT IS THE SOLE RESPONSIBILITY OF THE RECEIVER OF OUR PRODUCT TO COMPLY WITH EXISTING REGULATIONS AND INSTRUCTIONS.