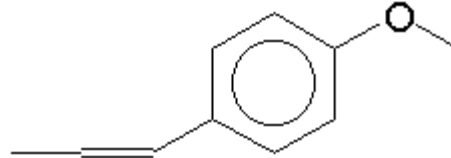


SPECIFICATION SHEET

VERSION 4,00 **VERSION DATE** 11/05/22 **PRINT DATE** 03/07/24

PRODUCT ANETHOLE SYNTHETIC
APPLICATIONS Industrial raw material not intended for direct use.
IUPAC NAME 1-METHOXY-4-(1-PROPENYL)BENCENE
SYNONYMS ISOESTRAGOLE, 1-METHOXY-4-(1-PROPENYL)BENCENE

FORMULA C10 H12 O
MOLECULAR WEIGHT 148,00
CAS 4180-23-8
CAS 2 104-46-1
EINECS 224-052-0
EINECS 2 203-205-5
FEMA 2086
TARIFF NUMBER 2909309090



FOOD GRADE CERTIFICATE AVAILABLE ON REQUEST
REACH REGISTRATION NO. 01-2119979097-22

SPECIFICATIONS

ASPECT AT 20°C	CLEAR MOBILE LIQUID / SOLID
COLOUR	COLORLESS TO PALE YELLOW
ODOUR	ANISE LIKE, SWEET
TASTE	SWEET
DENSITY AT 20°C (g / ml)	0,984 - 0,991
DENSITY 25/25	0,983 - 0,988
REFRACTIVE INDEX nD20	1,5590 - 1,5620
REFRACTIVE INDEX nD25	-
OPTICAL ROTATION (°)	-1,00 / 1,00
BOILING POINT (°C)	234 - 237
MELTING POINT (°C)	SOLIDIF. >20
FLASH POINT (°C)	110,00
ASSAY (% GC)	TRANS-ANETHOL > 99; CIS-ANETHOL < 0.3
ACID VALUE (mg KOH/g)	-
SOLUBILITY	1:6.5 ETHANOL 85°
VAPOUR PRESSURE	NOT DETERMINED
OTHER SOLUBILITIES	SOLUBLE 1:2 IN ETHANOL 96°. 1:6.5 ETHANOL 85°

OTHER TECHNICAL DATA

STABILITY AND STORAGE

KEEP IN TIGHTLY CLOSED CONTAINER IN A COOL AND DRY PLACE, PROTECTED FROM LIGHT. WHEN STORED FOR MORE THAN 24 MONTHS, QUALITY SHOULD BE CHECKED BEFORE USE.
PURGE HEADSPACE WITH NITROGEN.

WE BELIEVE THE ABOVE INFORMATION TO BE CORRECT BUT WE DO NOT PRESENT IT AS ALL INCLUSIVE AND AS SUCH SHOULD BE USED AS A GUIDE. IT IS THE SOLE RESPONSIBILITY OF THE RECEIVER OF OUR PRODUCT TO COMPLY WITH EXISTING REGULATIONS AND INSTRUCTIONS.

THIS PRODUCT HAS NOT BEEN FILTERED DUE TO TECHNICAL REASONS. WE RECOMMEND NOT TO USE IT UNLESS FILTERED WHEN USED AS A RAW MATERIAL IN FOOD INTENDED FOR FINAL CONSUMERS.