

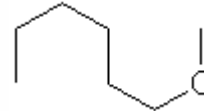
## SPECIFICATION SHEET

**VERSION** 3,00 **VERSION DATE** 19/09/22 **PRINT DATE** 04/07/24

**PRODUCT** DIOLA  
**APPLICATIONS** Industrial raw material not intended for direct use.  
**IUPAC NAME** METHYL N-HEXYL ETHER  
**SYNONYMS** METHYL N-HEXYL ETHER, DIOLA, 1-METHOXY-HEXANE

**FORMULA** C7 H16 O  
**MOLECULAR WEIGHT** 116,20  
**CAS** 4747-07-3

**EINECS** 225-263-0



**TARIFF NUMBER** 2909199090

**REACH REGISTRATION NO.** 01-2120746534-52

### SPECIFICATIONS

<b>ASPECT AT 20°C</b>	CLEAR MOBILE LIQUID
<b>COLOUR</b>	COLORLESS
<b>ODOUR</b>	FLORAL, HERBAL, FRUITY
<b>TASTE</b>	
<b>DENSITY AT 20°C (g / ml)</b>	0,767 - 0,775
<b>DENSITY 25/25</b>	-
<b>REFRACTIVE INDEX nD20</b>	1,3950 - 1,4010
<b>REFRACTIVE INDEX nD25</b>	-
<b>OPTICAL ROTATION (°)</b>	/
<b>BOILING POINT (°C)</b>	-
<b>MELTING POINT (°C)</b>	
<b>FLASH POINT (°C)</b>	22,00
<b>ASSAY (% GC)</b>	ETHER,HEXYL METHYL>97
<b>ACID VALUE (mg KOH/g)</b>	-
<b>SOLUBILITY</b>	INSOLUBLE IN WATER
<b>VAPOUR PRESSURE</b>	NOT DETERMINED
<b>OTHER SOLUBILITIES</b>	SOLUBLE IN ETHANOL

### OTHER TECHNICAL DATA

### STABILITY AND STORAGE

KEEP IN TIGHTLY CLOSED CONTAINER IN A COOL AND DRY PLACE, PROTECTED FROM LIGHT. WHEN STORED FOR MORE THAN 24 MONTHS, QUALITY SHOULD BE CHECKED BEFORE USE.  
IT CONTAINS 0,1% OF BHT

WE BELIEVE THE ABOVE INFORMATION TO BE CORRECT BUT WE DO NOT PRESENT IT AS ALL INCLUSIVE AND AS SUCH SHOULD BE USED AS A GUIDE.  
IT IS THE SOLE RESPONSIBILITY OF THE RECEIVER OF OUR PRODUCT TO COMPLY WITH EXISTING REGULATIONS AND INSTRUCTIONS.