

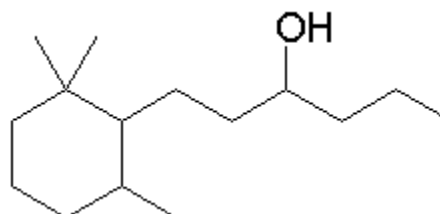
SPECIFICATION SHEET

VERSION 1,00 **VERSION DATE** 19/09/22 **PRINT DATE** 21/12/24

PRODUCT KARMAWOOD IFF
APPLICATIONS Industrial raw material not intended for direct use.
IUPAC NAME 2,2,6-TRIMETIL-ALFA-PROPIL-CICLOHEXANEPROPANOL
SYNONYMS 1-(2,2,6-TRIMETHYLCYCLOHEXYL)-HEXAN-3-OL, KARMAWOOD, NORLIMBANOL

FORMULA C15 H30 O
MOLECULAR WEIGHT 226,00
CAS 70788-30-6
CAS 2 253454-23-8
EINECS 274-892-7

FEMA -
TARIFF NUMBER 2906190090



REACH REGISTRATION NO. 01-2120766836-38

SPECIFICATIONS

ASPECT AT 20°C	CLEAR LIQUID / SOLID
COLOUR	COLORLESS TO PELE YELLOW
ODOUR	WOODY, AMBER, SANDALWOOD
TASTE	
DENSITY AT 20°C (g / ml)	0,894 - 0,902
DENSITY 25/25	-
REFRACTIVE INDEX nD20	1,4680 - 1,4740
REFRACTIVE INDEX nD25	-
OPTICAL ROTATION (°)	/
BOILING POINT (°C)	-
MELTING POINT (°C)	-
FLASH POINT (°C)	104,00
ASSAY (% GC)	SUM OF ISOMERS > 95%
ACID VALUE (mg KOH/g)	-
SOLUBILITY	INSOLUBLE IN WATER
VAPOUR PRESSURE	NOT DETERMINED
OTHER SOLUBILITIES	SOLUBLE IN ETHANOL

OTHER TECHNICAL DATA

STABILITY AND STORAGE

KEEP IN TIGHTLY CLOSED CONTAINER IN A COOL AND DRY PLACE, PROTECTED FROM LIGHT. WHEN STORED FOR MORE THAN 24 MONTHS, QUALITY SHOULD BE CHECKED BEFORE USE.

WE BELIEVE THE ABOVE INFORMATION TO BE CORRECT BUT WE DO NOT PRESENT IT AS ALL INCLUSIVE AND AS SUCH SHOULD BE USED AS A GUIDE. IT IS THE SOLE RESPONSIBILITY OF THE RECEIVER OF OUR PRODUCT TO COMPLY WITH EXISTING REGULATIONS AND INSTRUCTIONS.