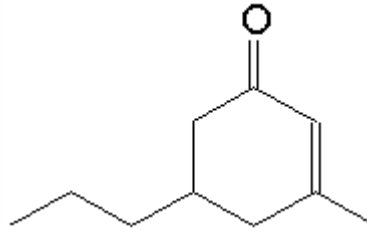


SPECIFICATION SHEET

VERSION 2,00 **VERSION DATE** 10/08/20 **PRINT DATE** 04/07/24

PRODUCT	CELERY KETONE (LIVESCONE)
APPLICATIONS	Industrial raw material not intended for direct use.
IUPAC NAME	3-METHYL-5-PROPYL-2-CYCLOHEXEN-1-ONE
SYNONYMS	CELERY KETONE, LIVESCONE, CETONE LIVECHE, GRAVENONE
FORMULA	C10H16O
MOLECULAR WEIGHT	152,00
CAS	3720-16-9
EINECS	223-069-0
FEMA	3577
TARIFF NUMBER	2914290090
KOSHER CERTIFICATE	AVAILABLE ON REQUEST
FOOD GRADE CERTIFICATE	AVAILABLE ON REQUEST
REACH REGISTRATION NO.	Exempt from registration (imported/manufactured < 1 ton/year)



SPECIFICATIONS

ASPECT AT 20°C	CLEAR MOBILE LIQUID
COLOUR	YELLOW
ODOUR	CELERY, GREEN, CUMIN, FRESH
TASTE	
DENSITY AT 20°C (g / ml)	0,924 - 0,935
DENSITY 25/25	-
REFRACTIVE INDEX nD20	1,4810 - 1,4860
REFRACTIVE INDEX nD25	-
OPTICAL ROTATION (°)	/
BOILING POINT (°C)	242°C
MELTING POINT (°C)	-
FLASH POINT (°C)	100,00
ASSAY (% GC)	> 97
ACID VALUE (mg KOH/g)	-
SOLUBILITY	INSOLUBLE IN WATER
VAPOUR PRESSURE	NOT DETERMINED
OTHER SOLUBILITIES	SOLUBLE IN ETHANOL

OTHER TECHNICAL DATA

STABILITY AND STORAGE

KEEP IN TIGHTLY CLOSED CONTAINER IN A COOL AND DRY PLACE, PROTECTED FROM LIGHT. WHEN STORED FOR MORE THAN 18 MONTHS, QUALITY SHOULD BE CHECKED BEFORE USE.

WE BELIEVE THE ABOVE INFORMATION TO BE CORRECT BUT WE DO NOT PRESENT IT AS ALL INCLUSIVE AND AS SUCH SHOULD BE USED AS A GUIDE. IT IS THE SOLE RESPONSIBILITY OF THE RECEIVER OF OUR PRODUCT TO COMPLY WITH EXISTING REGULATIONS AND INSTRUCTIONS.

THIS PRODUCT HAS NOT BEEN FILTERED DUE TO TECHNICAL REASONS. WE RECOMMEND NOT TO USE IT UNLESS FILTERED WHEN USED AS A RAW MATERIAL IN FOOD INTENDED FOR FINAL CONSUMERS.