

SPECIFICATION SHEET

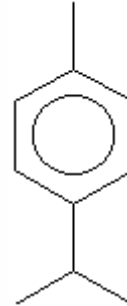
VERSION 5,00 **VERSION DATE** 23/06/22 **PRINT DATE** 03/07/24

PRODUCT PARA-CYMENE
APPLICATIONS Industrial raw material not intended for direct use.
IUPAC NAME 1-METHYL-4-ISOPROPYLBENZENE
SYNONYMS P-ISOPROPYLTOLUENE, 1-METHYL-4-(1-METHYLETHYL)-BENZENE

FORMULA C10 H14
MOLECULAR WEIGHT 134,22
CAS 99-87-6

EINECS 202-796-7

FEMA 2356
TARIFF NUMBER 2902900000



REACH REGISTRATION NO. 01-2120807345-59

SPECIFICATIONS

ASPECT AT 20°C CLEAR MOBILE LIQUID
COLOUR COLORLESS TO PALE YELLOW
ODOUR CITRIC, TERPENIC, LEMON, BERGAMOT
TASTE
DENSITY AT 20°C (g / ml) 0,854 - 0,862
DENSITY 25/25 0,853 - 0,855
REFRACTIVE INDEX nD20 1,4890 - 1,4910
REFRACTIVE INDEX nD25 -
OPTICAL ROTATION (°) -2,00 / 2,00
BOILING POINT (°C) 179°C (760 mmHg)
MELTING POINT (°C) -68
FLASH POINT (°C) 47,00
ASSAY (% GC) > 97
ACID VALUE (mg KOH/g) -
SOLUBILITY SOLUBLE IN ALCOHOL 90%
VAPOUR PRESSURE NOT DETERMINED
OTHER SOLUBILITIES SOLUBLE IN ETHANOL

OTHER TECHNICAL DATA

STABILITY AND STORAGE

KEEP IN TIGHTLY CLOSED CONTAINER IN A COOL AND DRY PLACE, PROTECTED FROM LIGHT. WHEN STORED FOR MORE THAN 24 MONTHS, QUALITY SHOULD BE CHECKED BEFORE USE.

WE BELIEVE THE ABOVE INFORMATION TO BE CORRECT BUT WE DO NOT PRESENT IT AS ALL INCLUSIVE AND AS SUCH SHOULD BE USED AS A GUIDE. IT IS THE SOLE RESPONSIBILITY OF THE RECEIVER OF OUR PRODUCT TO COMPLY WITH EXISTING REGULATIONS AND INSTRUCTIONS.

THIS PRODUCT HAS NOT BEEN FILTERED DUE TO TECHNICAL REASONS. WE RECOMMEND NOT TO USE IT UNLESS FILTERED WHEN USED AS A RAW MATERIAL IN FOOD INTENDED FOR FINAL CONSUMERS.