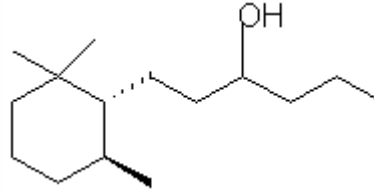


## SPECIFICATION SHEET

**VERSION** 1,00 **VERSION DATE** 19/09/22 **PRINT DATE** 03/07/24

<b>PRODUCT</b>	NORLIMBANOL®
<b>APPLICATIONS</b>	Industrial raw material not intended for direct use.
<b>IUPAC NAME</b>	2,2,6-TRIMETIL-ALFA-PROPIL-CICLOHEXANEPROPANOL
<b>SYNONYMS</b>	1-(2,2,6-TRIMETHYLCYCLOHEXYL)-HEXAN-3-OL, KARMAWOOD, NORLIMBANOL
<b>FORMULA</b>	C15 H30 O
<b>MOLECULAR WEIGHT</b>	226,00
<b>CAS</b>	70788-30-6
<b>EINECS</b>	274-892-7
<b>FEMA</b>	-
<b>TARIFF NUMBER</b>	2906190090
<b>KOSHER CERTIFICATE</b>	AVAILABLE ON REQUEST
<b>REACH REGISTRATION NO.</b>	01-2120085416-52



## SPECIFICATIONS

<b>ASPECT AT 20°C</b>	CLEAR LIQUID / SOLID
<b>COLOUR</b>	COLORLESS
<b>ODOUR</b>	WOODY, AMBER, ANIMAL, PATCHOULI
<b>TASTE</b>	
<b>DENSITY AT 20°C (g / ml)</b>	0,893 - 0,897
<b>DENSITY 25/25</b>	-
<b>REFRACTIVE INDEX nD20</b>	1,4690 - 1,4730
<b>REFRACTIVE INDEX nD25</b>	-
<b>OPTICAL ROTATION (°)</b>	-2,00 / 2,00
<b>BOILING POINT (°C)</b>	292°C (760 mm Hg)
<b>MELTING POINT (°C)</b>	-
<b>FLASH POINT (°C)</b>	101,00
<b>ASSAY (% GC)</b>	SUM OF ISOMERS > 98%
<b>ACID VALUE (mg KOH/g)</b>	< 1
<b>SOLUBILITY</b>	INSOLUBLE IN WATER
<b>VAPOUR PRESSURE</b>	0,5 Pa (20°C)
<b>OTHER SOLUBILITIES</b>	SOLUBLE IN ETHANOL

## OTHER TECHNICAL DATA

## STABILITY AND STORAGE

KEEP IN TIGHTLY CLOSED CONTAINER IN A COOL AND DRY PLACE, PROTECTED FROM LIGHT. WHEN STORED FOR MORE THAN 24 MONTHS, QUALITY SHOULD BE CHECKED BEFORE USE.

WE BELIEVE THE ABOVE INFORMATION TO BE CORRECT BUT WE DO NOT PRESENT IT AS ALL INCLUSIVE AND AS SUCH SHOULD BE USED AS A GUIDE. IT IS THE SOLE RESPONSIBILITY OF THE RECEIVER OF OUR PRODUCT TO COMPLY WITH EXISTING REGULATIONS AND INSTRUCTIONS.