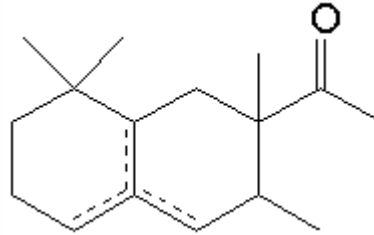


SPECIFICATION SHEET

VERSION	2,00	VERSION DATE	18/11/21	PRINT DATE	23/07/24
PRODUCT	TIMBERSILK IFF				
APPLICATIONS	Industrial raw material not intended for direct use.				
IUPAC NAME	1-(1,2,3,4,5,6,7,8-OCTAHYDRO-2,3,8,8-TETRAMETHYL-2-NAPHTHALENYL)-ETHAN-1-ONE				
SYNONYMS					
FORMULA	C16 H26 O				
MOLECULAR WEIGHT	234,40				
CAS	54464-57-2				
CAS 2	68155-66-8				
EINECS	259-174-3				
EINECS 2	268-978-3				
TARIFF NUMBER	3302909000				



REACH REGISTRATION NO. All the ingredients of the mixture have been registered or they are exempt from registration.

SPECIFICATIONS

ASPECT AT 20°C	SLIGHT VISCOUS CLEAR LIQUID	
COLOUR	PALE YELLOW	
ODOUR	SMOOTH, WARM, WOODY, AMBER, SILKY	
TASTE		
DENSITY AT 20°C (g / ml)	0,962	- 0,968
DENSITY 25/25	0,961	- 0,967
REFRACTIVE INDEX nD20	1,4970	- 1,5010
REFRACTIVE INDEX nD25		-
OPTICAL ROTATION (°)		/
BOILING POINT (°C)	290°C (typ. anal.)	
MELTING POINT (°C)	-	
FLASH POINT (°C)	111,00	
ASSAY (% GC)	BETA 30-45; ALPHA 18-26; DELTA 5,5-7,5; SECTION >89	
ACID VALUE (mg KOH/g)		
SOLUBILITY	INSOLUBLE IN WATER	
VAPOUR PRESSURE	NOT DETERMINED	
OTHER SOLUBILITIES	SOLUBLE IN ETHANOL	

OTHER TECHNICAL DATA CONTINUATION OF SPECIFICATIONS: GAMMA 13-20%; ISOPRECYCLEMONE <5%. SYNONIM FOR BETA ISOMER: ISOCYCLEMONE E.

STABILITY AND STORAGE

KEEP IN TIGHTLY CLOSED CONTAINER IN A COOL AND DRY PLACE, PROTECTED FROM LIGHT. WHEN STORED FOR MORE THAN 24 MONTHS, QUALITY SHOULD BE CHECKED BEFORE USE.
STABILIZED WITH 0,1% TOCOPHEROL. DO NOT REFRIGERATE OR FREEZE.

WE BELIEVE THE ABOVE INFORMATION TO BE CORRECT BUT WE DO NOT PRESENT IT AS ALL INCLUSIVE AND AS SUCH SHOULD BE USED AS A GUIDE. IT IS THE SOLE RESPONSIBILITY OF THE RECEIVER OF OUR PRODUCT TO COMPLY WITH EXISTING REGULATIONS AND INSTRUCTIONS.