

## SPECIFICATION SHEET

**VERSION** 2,00 **VERSION DATE** 19/09/22 **PRINT DATE** 23/07/24

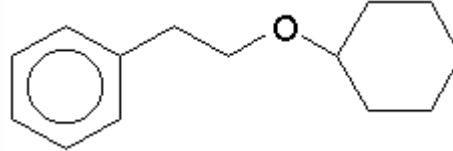
**PRODUCT** PHENAFLEUR® IFF  
**APPLICATIONS** Industrial raw material not intended for direct use.  
**IUPAC NAME** ETHER, CYCLOHEXYL PHENETHYL  
**SYNONYMS** ETHER, CYCLOHEXYL PHENYLETHYL

**FORMULA** C14 H20 O  
**MOLECULAR WEIGHT** 204,00  
**CAS** 80858-47-5

**EINECS** 279-576-2

**TARIFF NUMBER** 2909309090

**REACH REGISTRATION NO.** 01-2120525215-65



## SPECIFICATIONS

**ASPECT AT 20°C** CLEAR MOBILE LIQUID  
**COLOUR** COLORLESS TO PALE YELLOW  
**ODOUR** REFINED FLORAL, HYACINTH, FRUITY  
**TASTE**  
**DENSITY AT 20°C (g / ml)** 0,967 - 0,975  
**DENSITY 25/25** -  
**REFRACTIVE INDEX nD20** 1,5080 - 1,5130  
**REFRACTIVE INDEX nD25** -  
**OPTICAL ROTATION (°)** /  
**BOILING POINT (°C)** -  
**MELTING POINT (°C)**  
**FLASH POINT (°C)** 94,00  
**ASSAY (% GC)** > 97  
**ACID VALUE (mg KOH/g)** -  
**SOLUBILITY** INSOLUBLE IN WATER  
**VAPOUR PRESSURE** 0,0001 calc. (kPa)  
**OTHER SOLUBILITIES** SOLUBLE IN ETHANOL

## OTHER TECHNICAL DATA

## STABILITY AND STORAGE

KEEP IN TIGHTLY CLOSED CONTAINER IN A COOL AND DRY PLACE, PROTECTED FROM LIGHT. WHEN STORED FOR MORE THAN 24 MONTHS, QUALITY SHOULD BE CHECKED BEFORE USE.  
KEEP BETWEEN 8 -10°C

WE BELIEVE THE ABOVE INFORMATION TO BE CORRECT BUT WE DO NOT PRESENT IT AS ALL INCLUSIVE AND AS SUCH SHOULD BE USED AS A GUIDE. IT IS THE SOLE RESPONSIBILITY OF THE RECEIVER OF OUR PRODUCT TO COMPLY WITH EXISTING REGULATIONS AND INSTRUCTIONS.