

## SPECIFICATION SHEET

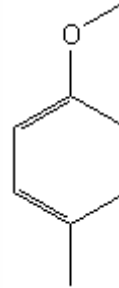
**VERSION** 5,00 **VERSION DATE** 22/09/22 **PRINT DATE** 03/07/24

**PRODUCT** PARA-CRESYL METHYL ETHER  
**APPLICATIONS** Industrial raw material not intended for direct use.  
**IUPAC NAME** 1-METHOXY-4-METHYLBENZENE  
**SYNONYMS** 4-METHYLANISOLE, 4-METHOXYTOLUENE, O-METHYL-P-CRESOL

**FORMULA** C8 H10 O  
**MOLECULAR WEIGHT** 122,00  
**CAS** 104-93-8

**EINECS** 203-253-7

**FEMA** 2681  
**TARIFF NUMBER** 2909309090



**REACH REGISTRATION NO.** On request. REACH and non-REACH material available for this product.

## SPECIFICATIONS

<b>ASPECT AT 20°C</b>	CLEAR MOBILE LIQUID
<b>COLOUR</b>	COLORLESS TO PALE YELLOW
<b>ODOUR</b>	YLANG YLANG, LEATHER
<b>TASTE</b>	VANILLA, NUTS, PHENOLIC
<b>DENSITY AT 20°C (g / ml)</b>	0,968 - 0,971
<b>DENSITY 25/25</b>	-
<b>REFRACTIVE INDEX nD20</b>	1,5100 - 1,5130
<b>REFRACTIVE INDEX nD25</b>	-
<b>OPTICAL ROTATION (°)</b>	/
<b>BOILING POINT (°C)</b>	160 - 161 (1013 mbar)
<b>MELTING POINT (°C)</b>	
<b>FLASH POINT (°C)</b>	62,00
<b>ASSAY (% GC)</b>	> 99
<b>ACID VALUE (mg KOH/g)</b>	-
<b>SOLUBILITY</b>	0,40 g/l IN WATER (25°C)
<b>VAPOUR PRESSURE</b>	1,7 mbar (20°C)
<b>OTHER SOLUBILITIES</b>	SOLUBLE IN ETHANOL

## OTHER TECHNICAL DATA

## STABILITY AND STORAGE

KEEP IN TIGHTLY CLOSED CONTAINER IN A COOL AND DRY PLACE, PROTECTED FROM LIGHT. WHEN STORED FOR MORE THAN 18 MONTHS, QUALITY SHOULD BE CHECKED BEFORE USE.

WE BELIEVE THE ABOVE INFORMATION TO BE CORRECT BUT WE DO NOT PRESENT IT AS ALL INCLUSIVE AND AS SUCH SHOULD BE USED AS A GUIDE. IT IS THE SOLE RESPONSIBILITY OF THE RECEIVER OF OUR PRODUCT TO COMPLY WITH EXISTING REGULATIONS AND INSTRUCTIONS.

THIS PRODUCT HAS NOT BEEN FILTERED DUE TO TECHNICAL REASONS. WE RECOMMEND NOT TO USE IT UNLESS FILTERED WHEN USED AS A RAW MATERIAL IN FOOD INTENDED FOR FINAL CONSUMERS.