

SPECIFICATION SHEET

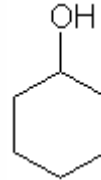
VERSION 1,00 **VERSION DATE** 19/09/22 **PRINT DATE** 04/07/24

PRODUCT CYCLOHEXANOL
APPLICATIONS Raw material for industrial use intended for research and development.
IUPAC NAME CYCLOHEXANOL
SYNONYMS

FORMULA C6 H12 O
MOLECULAR WEIGHT 100,20
CAS 108-93-0

EINECS 203-630-6

TARIFF NUMBER 2906120000



REACH REGISTRATION NO. Exempt from registration (imported/manufactured < 1 ton/year)

SPECIFICATIONS

ASPECT AT 20°C LIQUID/SOLID
COLOUR COLORLESS/WHITE
ODOUR CAMPHOR-LIKE
TASTE
DENSITY AT 20°C (g / ml) 0,944 - 0,951
DENSITY 25/25 -
REFRACTIVE INDEX nD20 1,4620 - 1,4680
REFRACTIVE INDEX nD25 -
OPTICAL ROTATION (°) /
BOILING POINT (°C) 161
MELTING POINT (°C) 25
FLASH POINT (°C) 68,00
ASSAY (% GC) > 99
ACID VALUE (mg KOH/g) -
SOLUBILITY SOLUBLE IN WATER: 40 g/l (20°C)
VAPOUR PRESSURE 0,98 mmHg (25°C)
OTHER SOLUBILITIES SOLUBLE IN ETHANOL

OTHER TECHNICAL DATA MOISTURE <0,1%

STABILITY AND STORAGE

KEEP IN TIGHTLY CLOSED CONTAINER IN A COOL AND DRY PLACE, PROTECTED FROM LIGHT. WHEN STORED FOR MORE THAN 24 MONTHS, QUALITY SHOULD BE CHECKED BEFORE USE.
IT IS HYGROSCOPIC.

WE BELIEVE THE ABOVE INFORMATION TO BE CORRECT BUT WE DO NOT PRESENT IT AS ALL INCLUSIVE AND AS SUCH SHOULD BE USED AS A GUIDE.
IT IS THE SOLE RESPONSIBILITY OF THE RECEIVER OF OUR PRODUCT TO COMPLY WITH EXISTING REGULATIONS AND INSTRUCTIONS.