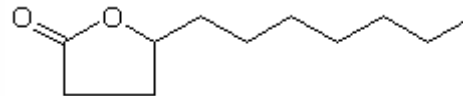


SPECIFICATION SHEET

VERSION	2,00	VERSION DATE	11/04/22	PRINT DATE	03/07/24
PRODUCT	ALDEHYDE C-14 (GAMMA-UNDECALACTONE) NATURAL CHIRAL BESTALLY				
APPLICATIONS	Industrial raw material not intended for direct use.				
IUPAC NAME	UNDECAN-4-OLIDE				
SYNONYMS	PEACH ALDEHYDE, GAMMA-UNDECALACTONE				
PLANT OF ORIGIN					
PART OF THE PLANT	EX-CASTOR OIL				
FORMULA	C11 H20 O2				
MOLECULAR WEIGHT	184,00				
CAS	104-67-6				
EINECS	203-225-4				
FEMA	3091				
TARIFF NUMBER	2932209090				
KOSHER CERTIFICATE	AVAILABLE ON REQUEST				
FOOD GRADE CERTIFICATE	AVAILABLE ON REQUEST				
REACH REGISTRATION NO.	On request. REACH and non-REACH material available for this product.				



SPECIFICATIONS

ASPECT AT 20°C	CLEAR MOBILE LIQUID	
COLOUR	COLORLESS TO PALE YELLOW	
ODOUR	STRONG, SUGGESTIVE OF PEACH	
TASTE	SWEET, SIMILAR TO PEACH	
DENSITY AT 20°C (g / ml)	0,943	- 0,948
DENSITY 25/25	0,942	- 0,945
REFRACTIVE INDEX nD20	1,4480	- 1,4530
REFRACTIVE INDEX nD25	-	
OPTICAL ROTATION (°)	25,00	/ 40,00
BOILING POINT (°C)	164-166°C (13 mm); 297°C 1 atm	
MELTING POINT (°C)	-	
FLASH POINT (°C)	113,00	
ASSAY (% GC)	> 98	
ACID VALUE (mg KOH/g)	< 5	
SOLUBILITY	INSOLUBLE IN WATER	
VAPOUR PRESSURE	NOT DETERMINED	
OTHER SOLUBILITIES	SOLUBLE 1:5 IN ETHANOL 60%	
OTHER TECHNICAL DATA	CHIRAL QUALITY	

STABILITY AND STORAGE

KEEP IN TIGHTLY CLOSED CONTAINER IN A COOL AND DRY PLACE, PROTECTED FROM LIGHT. WHEN STORED FOR MORE THAN 12 MONTHS, QUALITY SHOULD BE CHECKED BEFORE USE.

WE BELIEVE THE ABOVE INFORMATION TO BE CORRECT BUT WE DO NOT PRESENT IT AS ALL INCLUSIVE AND AS SUCH SHOULD BE USED AS A GUIDE. IT IS THE SOLE RESPONSIBILITY OF THE RECEIVER OF OUR PRODUCT TO COMPLY WITH EXISTING REGULATIONS AND INSTRUCTIONS.

THIS PRODUCT HAS NOT BEEN FILTERED DUE TO TECHNICAL REASONS. WE RECOMMEND NOT TO USE IT UNLESS FILTERED WHEN USED AS A RAW MATERIAL IN FOOD INTENDED FOR FINAL CONSUMERS.