

SPECIFICATION SHEET

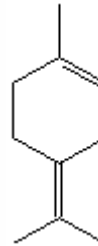
VERSION 4,00 **VERSION DATE** 10/10/22 **PRINT DATE** 03/07/24

PRODUCT TERPINOLENE 90
APPLICATIONS Industrial raw material not intended for direct use.
IUPAC NAME P-MENTH-1,4(8)-DIENE
SYNONYMS ALPHA-TERPINOLENE;1-METHYL-4-ISOPROPYLIDENE-1-CYCLOHEXENE

FORMULA C10 H16
MOLECULAR WEIGHT 136,00
CAS 586-62-9

EINECS 209-578-0

FEMA 3046
TARIFF NUMBER 2902190000



REACH REGISTRATION NO. On request. REACH and non-REACH material available for this product.

SPECIFICATIONS

ASPECT AT 20°C CLEAR MOBILE LIQUID
COLOUR COLORLESS TO PALE YELLOW
ODOUR SWEET, PINE, HERBAL, ANISIC, LIME
TASTE SOMEWHAT SWEET, CITRUS FLAVOR
DENSITY AT 20°C (g / ml) 0,856 - 0,866
DENSITY 25/25 -
REFRACTIVE INDEX nD20 1,4880 - 1,4930
REFRACTIVE INDEX nD25 -
OPTICAL ROTATION (°) /
BOILING POINT (°C) 183 - 185
MELTING POINT (°C) -
FLASH POINT (°C) 60,00
ASSAY (% GC) TERPINOLENE > 85; TERPINOLENE+ISOTERPINOLENE > 90
ACID VALUE (mg KOH/g) -
SOLUBILITY SOLUBILITY IN WATER < 1%
VAPOUR PRESSURE 2 mm Hg (20°C)
OTHER SOLUBILITIES SOLUBLE IN ETHANOL

OTHER TECHNICAL DATA PEROXIDE INDEX < 10 mmol/L

STABILITY AND STORAGE

KEEP IN TIGHTLY CLOSED CONTAINER IN A COOL AND DRY PLACE, PROTECTED FROM LIGHT. WHEN STORED FOR MORE THAN 24 MONTHS, QUALITY SHOULD BE CHECKED BEFORE USE.
POLYMERIZES READILY. PURGE HEADSPACE WITH NITROGEN.

WE BELIEVE THE ABOVE INFORMATION TO BE CORRECT BUT WE DO NOT PRESENT IT AS ALL INCLUSIVE AND AS SUCH SHOULD BE USED AS A GUIDE. IT IS THE SOLE RESPONSIBILITY OF THE RECEIVER OF OUR PRODUCT TO COMPLY WITH EXISTING REGULATIONS AND INSTRUCTIONS.

THIS PRODUCT HAS NOT BEEN FILTERED DUE TO TECHNICAL REASONS. WE RECOMMEND NOT TO USE IT UNLESS FILTERED WHEN USED AS A RAW MATERIAL IN FOOD INTENDED FOR FINAL CONSUMERS.