

SPECIFICATION SHEET

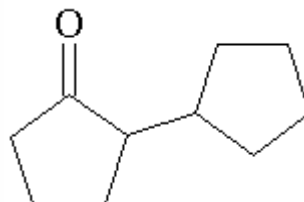
VERSION 1,00 **VERSION DATE** 19/09/22 **PRINT DATE** 17/04/24

PRODUCT 2-CYCLOPENTYL CYCLOPENTANONE
APPLICATIONS Industrial raw material not intended for direct use.
IUPAC NAME [1,1'-BICYCLOPENTYL]-2-ONE
SYNONYMS 2-CYCLOPENTYL CYCLOPENTANONE

FORMULA C10 H16 O
MOLECULAR WEIGHT 152,24
CAS 4884-24-6

EINECS 225-495-2

FEMA 4514
TARIFF NUMBER 2914290090



REACH REGISTRATION NO. Exempt from registration (imported/manufactured < 1 ton/year)

SPECIFICATIONS

ASPECT AT 20°C	CLEAR MOBILE LIQUID	
COLOUR	COLORLESS TO PALE YELLOW	
ODOUR	FRESH GREEN COOL MINT, AGRESTIC WOOD	
TASTE		
DENSITY AT 20°C (g / ml)	0,973	- 0,983
DENSITY 25/25		-
REFRACTIVE INDEX nD20	1,4750	- 1,4810
REFRACTIVE INDEX nD25		-
OPTICAL ROTATION (°)		/
BOILING POINT (°C)	-	
MELTING POINT (°C)	-	
FLASH POINT (°C)	104,00	
ASSAY (% GC)	> 97	
ACID VALUE (mg KOH/g)	< 2	
SOLUBILITY	INSOLUBLE IN WATER	
VAPOUR PRESSURE	17,3 hPa (109°C)	
OTHER SOLUBILITIES	SOLUBLE IN ETHANOL	

OTHER TECHNICAL DATA USEFUL FOR GIVING FRESH MINTY CHARACTER AND DIFFUSIVENESS TO CITRUS, HERBAL, FRUITY AND FOUGERE ACCORDS. STABLE IN A WIDE RANGE OF PRODUCTS. NOT REPORTED AS BEING FOUND IN NATURE.

STABILITY AND STORAGE

KEEP IN TIGHTLY CLOSED CONTAINER IN A COOL AND DRY PLACE, PROTECTED FROM LIGHT. WHEN STORED FOR MORE THAN 24 MONTHS, QUALITY SHOULD BE CHECKED BEFORE USE.

WE BELIEVE THE ABOVE INFORMATION TO BE CORRECT BUT WE DO NOT PRESENT IT AS ALL INCLUSIVE AND AS SUCH SHOULD BE USED AS A GUIDE. IT IS THE SOLE RESPONSIBILITY OF THE RECEIVER OF OUR PRODUCT TO COMPLY WITH EXISTING REGULATIONS AND INSTRUCTIONS.