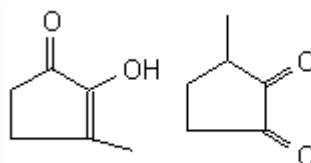


SPECIFICATION SHEET

VERSION	2,00	VERSION DATE	19/09/22	PRINT DATE	20/04/24
PRODUCT	METHYL CYCLOPENTENOLONE HYDRATE NATURAL EU BESTALLY				
APPLICATIONS	Industrial raw material not intended for direct use.				
IUPAC NAME	2-HYDROXY-3-METHYL-2-CYCLOPENTENONE MONOHYDRATE				
SYNONYMS	CYCLOTENE, CORYLONE, KETONAROME, MAPLE LACTONE				
PLANT OF ORIGIN					
PART OF THE PLANT					
FORMULA	C6 H8 O2 · H2O				
MOLECULAR WEIGHT	130,15				
CAS	80-71-7				
CAS 2	765-70-8				
EINECS	201-303-2				
EINECS 2	212-154-8				
FEMA	2700				
TARIFF NUMBER	2914409090				
KOSHER CERTIFICATE	AVAILABLE ON REQUEST				
FOOD GRADE CERTIFICATE	AVAILABLE ON REQUEST				
REACH REGISTRATION NO.	Exempt from registration (according to article 2.5 of REACH)				



ENOL FORM DIKETONE FORM

SPECIFICATIONS

ASPECT AT 20°C	CRYSTALLINE POWDER
COLOUR	WHITE - BEIGE
ODOUR	CARAMEL, SWEET, MAPLE, LICORICE, NUTTY
TASTE	SWEET
DENSITY AT 20°C (g / ml)	-
DENSITY 25/25	-
REFRACTIVE INDEX nD20	-
REFRACTIVE INDEX nD25	-
OPTICAL ROTATION (°)	/
BOILING POINT (°C)	-
MELTING POINT (°C)	70 - 78
FLASH POINT (°C)	110,00
ASSAY (% GC)	MCP HYDRATE >96%; MCP 82-86%; WATER 14-18%
ACID VALUE (mg KOH/g)	-
SOLUBILITY	SOLUBLE 1 g IN 72 mL OF WATER
VAPOUR PRESSURE	NOT DETERMINED
OTHER SOLUBILITIES	SOLUBLE 1 g IN 5 mL OF ETHANOL 90%. SOLUBLE IN PROPYLENGLYCOL
OTHER TECHNICAL DATA	HYDRATED QUALITY.

STABILITY AND STORAGE

KEEP IN TIGHTLY CLOSED CONTAINER IN A COOL AND DRY PLACE, PROTECTED FROM LIGHT. WHEN STORED FOR MORE THAN 24 MONTHS, QUALITY SHOULD BE CHECKED BEFORE USE.

WE BELIEVE THE ABOVE INFORMATION TO BE CORRECT BUT WE DO NOT PRESENT IT AS ALL INCLUSIVE AND AS SUCH SHOULD BE USED AS A GUIDE. IT IS THE SOLE RESPONSIBILITY OF THE RECEIVER OF OUR PRODUCT TO COMPLY WITH EXISTING REGULATIONS AND INSTRUCTIONS.

THIS PRODUCT HAS NOT BEEN FILTERED DUE TO TECHNOLOGICAL REASONS. WE RECOMMEND NOT TO USE IT UNLESS FILTERED WHEN USED AS A RAW MATERIAL IN FOOD INTENDED FOR FINAL CONSUMERS.