

## SPECIFICATION SHEET

**VERSION** 2,00 **VERSION DATE** 19/09/22 **PRINT DATE** 08/05/24

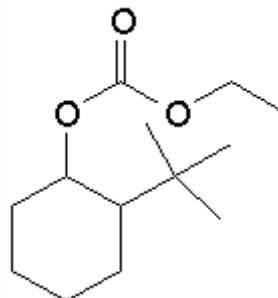
**PRODUCT** FLORAMAT KAO  
**APPLICATIONS** Industrial raw material not intended for direct use.  
**IUPAC NAME** ETHYL 2-TERT-BUTYLCYCLOHEXYL CARBONATE  
**SYNONYMS**

**FORMULA** C13 H24 O3  
**MOLECULAR WEIGHT** 228,00  
**CAS** 67801-64-3

**EINECS** 267-184-4

**TARIFF NUMBER** 2920901090  
**KOSHER CERTIFICATE** AVAILABLE ON REQUEST

**REACH REGISTRATION NO.** 01-2120739358-45



## SPECIFICATIONS

<b>ASPECT AT 20°C</b>	CLEAR MOBILE LIQUID
<b>COLOUR</b>	COLORLESS
<b>ODOUR</b>	SPICY-WOODY, FLORAL, FRUITY, DAMASCONE
<b>TASTE</b>	
<b>DENSITY AT 20°C (g / ml)</b>	0,973 - 0,977
<b>DENSITY 25/25</b>	-
<b>REFRACTIVE INDEX nD20</b>	1,4490 - 1,4530
<b>REFRACTIVE INDEX nD25</b>	-
<b>OPTICAL ROTATION (°)</b>	/
<b>BOILING POINT (°C)</b>	73 (0,1 mbar)
<b>MELTING POINT (°C)</b>	
<b>FLASH POINT (°C)</b>	120,00
<b>ASSAY (% GC)</b>	SUM ISOMERS > 95
<b>ACID VALUE (mg KOH/g)</b>	-
<b>SOLUBILITY</b>	NEARLY INSOLUBLE IN WATER
<b>VAPOUR PRESSURE</b>	NOT DETERMINED
<b>OTHER SOLUBILITIES</b>	SOLUBLE IN ETHANOL

**OTHER TECHNICAL DATA** IT GIVES FRUITY-FLORAL ODOR AND ROSE KETONE-LIKE NUANCE WITH RICH SWEETNESS. IN SKIN CARE ACTS AS REPLACEMENT OF ROSE KETONES TO ADD SWEET ROSY EFFECT. IN FABRIC-CARE BRINGS LONG LASTING SWEETNESS, IT COMBINES WELL WITH FRUITY INGREDIENTS SUCH OTBCHA

## STABILITY AND STORAGE

KEEP IN TIGHTLY CLOSED CONTAINER IN A COOL AND DRY PLACE, PROTECTED FROM LIGHT. WHEN STORED FOR MORE THAN 24 MONTHS, QUALITY SHOULD BE CHECKED BEFORE USE.

WE BELIEVE THE ABOVE INFORMATION TO BE CORRECT BUT WE DO NOT PRESENT IT AS ALL INCLUSIVE AND AS SUCH SHOULD BE USED AS A GUIDE. IT IS THE SOLE RESPONSIBILITY OF THE RECEIVER OF OUR PRODUCT TO COMPLY WITH EXISTING REGULATIONS AND INSTRUCTIONS.