

SPECIFICATION SHEET

VERSION 4,00 **VERSION DATE** 18/08/23 **PRINT DATE** 18/04/24

PRODUCT PHELLANDRENE, ALPHA NATURAL EX-DIVES

APPLICATIONS Industrial raw material not intended for direct use.

IUPAC NAME 4-ISOPROPYL-1-METHYL-1,5-CYCLOHEXADIENE

SYNONYMS 1,5-P-MENTHADIENE, PIVAROSE

PLANT OF ORIGIN Eucalyptus dives

PART OF THE PLANT LEAVES AND STEM

FORMULA C10 H16

MOLECULAR WEIGHT 136,00

CAS 4221-98-1

CAS 2 99-83-2

EINECS 224-167-6

EINECS 2 202-792-5

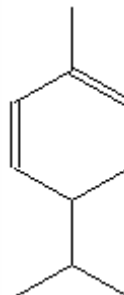
FEMA 2856

TARIFF NUMBER 2902190000

KOSHER CERTIFICATE AVAILABLE ON REQUEST

FOOD GRADE CERTIFICATE AVAILABLE ON REQUEST

REACH REGISTRATION NO. 01-2120768949-27



SPECIFICATIONS

| | | |
|---------------------------------|-------------------------------|----------|
| ASPECT AT 20°C | CLEAR MOBILE LIQUID | |
| COLOUR | COLORLESS | |
| ODOUR | CITRUS, LIME, PEPPER, JUNIPER | |
| TASTE | | |
| DENSITY AT 20°C (g / ml) | 0,835 | - 0,842 |
| DENSITY 25/25 | 0,832 | - 0,840 |
| REFRACTIVE INDEX nD20 | 1,4700 | - 1,4750 |
| REFRACTIVE INDEX nD25 | - | |
| OPTICAL ROTATION (°) | -170,00 / -145,00 | |
| BOILING POINT (°C) | 173 - 176 | |
| MELTING POINT (°C) | | |
| FLASH POINT (°C) | 53,00 | |
| ASSAY (% GC) | > 85 | |
| ACID VALUE (mg KOH/g) | - | |
| SOLUBILITY | SOLUBLE IN ALCOHOL 90% | |
| VAPOUR PRESSURE | NOT DETERMINED | |
| OTHER SOLUBILITIES | SOLUBLE IN ETHANOL | |

OTHER TECHNICAL DATA CIMENE AND OTHER TERPENE HYDROCARBONS: 10-12%.

STABILITY AND STORAGE

KEEP IN TIGHTLY CLOSED CONTAINER IN A COOL AND DRY PLACE, PROTECTED FROM LIGHT. WHEN STORED FOR MORE THAN 24 MONTHS, QUALITY SHOULD BE CHECKED BEFORE USE.

WE BELIEVE THE ABOVE INFORMATION TO BE CORRECT BUT WE DO NOT PRESENT IT AS ALL INCLUSIVE AND AS SUCH SHOULD BE USED AS A GUIDE. IT IS THE SOLE RESPONSIBILITY OF THE RECEIVER OF OUR PRODUCT TO COMPLY WITH EXISTING REGULATIONS AND INSTRUCTIONS.

THIS PRODUCT HAS NOT BEEN FILTERED DUE TO TECHNICAL REASONS. WE RECOMMEND NOT TO USE IT UNLESS FILTERED WHEN USED AS A RAW MATERIAL IN FOOD INTENDED FOR FINAL CONSUMERS.