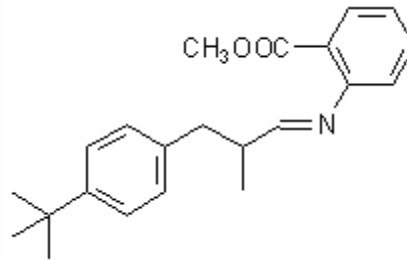


## SPECIFICATION SHEET

<b>VERSION</b>	1,00	<b>VERSION DATE</b>	15/07/10	<b>PRINT DATE</b>	22/02/20
<b>PRODUCT</b>	SCHIFF BASE, LILIAL				
<b>APPLICATIONS</b>	Raw material for industrial use intended for the manufacture of fragrances.				
<b>IUPAC NAME</b>	SCHIFF BASE, LILIAL/METHYL ANTHRANILATE				
<b>SYNONYMS</b>	VERDANTOL;LYSMERAL SCHIFF BASE;LILIAVERT;LILYANTINE;AURANTIOL SUBSTITUTE				
<b>FORMULA</b>	C22 H27 N O2				
<b>MOLECULAR WEIGHT</b>	337,20				
<b>CAS</b>	91-51-0				
<b>EINECS</b>	202-073-6				
<b>TARIFF NUMBER</b>	2925290090				
<b>REACH REGISTRATION NO.</b>	01-2120768903-43				



## SPECIFICATIONS

<b>ASPECT AT 20° C</b>	VISCIOUS LIQUID	
<b>COLOUR</b>	YELLOW	
<b>ODOUR</b>	FLORAL, DRY, LINDEN, ORANGE FLOWER	
<b>TASTE</b>		
<b>DENSITY A 20° C (g / ml)</b>	-	
<b>DENSITY 25/25</b>	-	
<b>REFRACTIVE INDEX nD20</b>	1,5880	- 1,6080
<b>REFRACTIVE INDEX nD25</b>	-	
<b>OPTICAL ROTATION (°)</b>	/	
<b>BOILING POINT (°C)</b>	-	
<b>MELTING POINT (°C)</b>		
<b>FLASH POINT (°C)</b>	101,00	
<b>ASSAY (% GC)</b>	> 80%	
<b>ACID VALUE (mg KOH/g)</b>		
<b>SOLUBILITY</b>	INSOLUBLE IN WATER	
<b>VAPOUR PRESSURE</b>	NOT DETERMINED	
<b>OTHER SOLUBILITIES</b>	SOLUBLE IN ETHANOL	

**OTHER TECHNICAL DATA** METHYL N-METHYLANTHRANILATE < 0,13%.

## STABILITY AND STORAGE

KEEP IN TIGHTLY CLOSED CONTAINER IN A COOL AND DRY PLACE, PROTECTED FROM LIGHT. WHEN STORED FOR MORE THAN 24 MONTHS, QUALITY SHOULD BE CHECKED BEFORE USE.  
IT CONTAINS 0,01-0,06% OF ALPHA-TOCOPHEROL.

WE BELIEVE THE ABOVE INFORMATION TO BE CORRECT BUT WE DO NOT PRESENT IT AS ALL INCLUSIVE AND AS SUCH SHOULD BE USED AS A GUIDE.  
IT IS THE SOLE RESPONSIBILITY OF THE RECEIVER OF OUR PRODUCT TO COMPLY WITH EXISTING REGULATIONS AND INSTRUCTIONS.