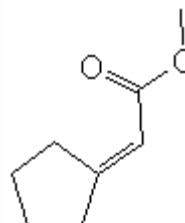


## SPECIFICATION SHEET

**VERSION** 2,00 **VERSION DATE** 31/08/22 **PRINT DATE** 02/05/24

|                               |  |
|-------------------------------|--|
| <b>PRODUCT</b>                | CYCLOPIDENE FIRMENICH 937160                         |
| <b>APPLICATIONS</b>           | Industrial raw material not intended for direct use. |
| <b>IUPAC NAME</b>             | ACETIC ACID, CYCLOPENTYLIDENE-, METHYL ESTER         |
| <b>SYNONYMS</b>               | TUBEROSE ACETATE, METHYL CYCLOPENTYLIDENE ACETATE    |
| <b>FORMULA</b>                | C8 H12 O2  |
| <b>MOLECULAR WEIGHT</b>       | 140,10   |
| <b>CAS</b>                    | 40203-73-4   |
| <b>EINECS</b>                 | 254-837-3  |
| <b>FEMA</b>                   | -  |
| <b>TARIFF NUMBER</b>          | 2916200090   |
| <b>KOSHER CERTIFICATE</b>     | AVAILABLE ON REQUEST                                 |
| <b>REACH REGISTRATION NO.</b> | 01-2120065587-45                                     |



## SPECIFICATIONS

|                                 |                                  |
|---------------------------------|----------------------------------|
| <b>ASPECT AT 20°C</b>           | CLEAR MOBILE LIQUID              |
| <b>COLOUR</b>                   | COLORLESS TO PALE YELLOW         |
| <b>ODOUR</b>                    | FLORAL MODIFIER RELATED TO YLANG |
| <b>TASTE</b>                    |                                  |
| <b>DENSITY AT 20°C (g / ml)</b> | 1,004 - 1,012                    |
| <b>DENSITY 25/25</b>            | 1,003 - 1,011                    |
| <b>REFRACTIVE INDEX nD20</b>    | 1,4730 - 1,4770                  |
| <b>REFRACTIVE INDEX nD25</b>    | 1,4710 - 1,4750                  |
| <b>OPTICAL ROTATION (°)</b>     | /                                |
| <b>BOILING POINT (°C)</b>       | -                                |
| <b>MELTING POINT (°C)</b>       | -                                |
| <b>FLASH POINT (°C)</b>         | 69,00                            |
| <b>ASSAY (% GC)</b>             | > 90                             |
| <b>ACID VALUE (mg KOH/g)</b>    | < 1                              |
| <b>SOLUBILITY</b>               | INSOLUBLE IN WATER               |
| <b>VAPOUR PRESSURE</b>          | NOT DETERMINED                   |
| <b>OTHER SOLUBILITIES</b>       | SOLUBLE IN ETHANOL               |

**OTHER TECHNICAL DATA** IT GIVES DIFFUSION AND LIFT. IT COMBINES THE SALICYLATE/CRESYL HARMONY THAT EXISTS IN MANY WHITE FLORALS.

## STABILITY AND STORAGE

KEEP IN TIGHTLY CLOSED CONTAINER IN A COOL AND DRY PLACE, PROTECTED FROM LIGHT. WHEN STORED FOR MORE THAN 24 MONTHS, QUALITY SHOULD BE CHECKED BEFORE USE.  
IT CONTAINS 0,05% BHT

WE BELIEVE THE ABOVE INFORMATION TO BE CORRECT BUT WE DO NOT PRESENT IT AS ALL INCLUSIVE AND AS SUCH SHOULD BE USED AS A GUIDE.  
IT IS THE SOLE RESPONSIBILITY OF THE RECEIVER OF OUR PRODUCT TO COMPLY WITH EXISTING REGULATIONS AND INSTRUCTIONS.