

SPECIFICATION SHEET

VERSION 1,00 **VERSION DATE** 19/09/22 **PRINT DATE** 17/04/24

PRODUCT METHYL CYCLOPENTENOLONE NATURAL EU BESTALLY

APPLICATIONS Industrial raw material not intended for direct use.

IUPAC NAME 2-HYDROXY-3-METHYL-2-CYCLOPENTENONE

SYNONYMS CYCLOTENE, CORYLONE, KETONAROME, MAPLE LACTONE

PLANT OF ORIGIN

PART OF THE PLANT

FORMULA C₆ H₈ O₂

MOLECULAR WEIGHT 112,00

CAS 80-71-7

CAS 2 765-70-8

EINECS 201-303-2

EINECS 2 212-154-8

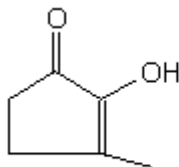
FEMA 2700

TARIFF NUMBER 2914409090

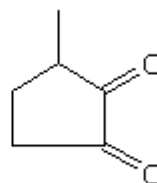
KOSHER CERTIFICATE AVAILABLE ON REQUEST

FOOD GRADE CERTIFICATE AVAILABLE ON REQUEST

REACH REGISTRATION NO. On request. REACH and non-REACH material available for this product.



ENOL FORM



DIKETONE FORM

SPECIFICATIONS

ASPECT AT 20°C	CRYSTALLINE POWDER
COLOUR	WHITE TO PALE YELLOW OR BEIGE
ODOUR	SWEET, NUTS
TASTE	SWEET
DENSITY AT 20°C (g / ml)	-
DENSITY 25/25	-
REFRACTIVE INDEX n_D20	-
REFRACTIVE INDEX n_D25	-
OPTICAL ROTATION (°)	/
BOILING POINT (°C)	-
MELTING POINT (°C)	104 - 108
FLASH POINT (°C)	110,00
ASSAY (% GC)	> 99
ACID VALUE (mg KOH/g)	
SOLUBILITY	1 g/72 ml WATER
VAPOUR PRESSURE	NOT DETERMINED
OTHER SOLUBILITIES	1 g/ 5 ml ETHANOL 90%

OTHER TECHNICAL DATA ANHYDROUS QUALITY. MAIN FORM IN THE PURE PRODUCT IS THE ENOL FORM. OBTAINED BY REACTION OF NATURAL RAW MATERIALS.

STABILITY AND STORAGE

KEEP IN TIGHTLY CLOSED CONTAINER IN A COOL AND DRY PLACE, PROTECTED FROM LIGHT. WHEN STORED FOR MORE THAN 24 MONTHS, QUALITY SHOULD BE CHECKED BEFORE USE.

WE BELIEVE THE ABOVE INFORMATION TO BE CORRECT BUT WE DO NOT PRESENT IT AS ALL INCLUSIVE AND AS SUCH SHOULD BE USED AS A GUIDE. IT IS THE SOLE RESPONSIBILITY OF THE RECEIVER OF OUR PRODUCT TO COMPLY WITH EXISTING REGULATIONS AND INSTRUCTIONS.

THIS PRODUCT HAS NOT BEEN FILTERED DUE TO TECHNICAL REASONS. WE RECOMMEND NOT TO USE IT UNLESS FILTERED WHEN USED AS A RAW MATERIAL IN FOOD INTENDED FOR FINAL CONSUMERS.